

TACAN Chan 19	APCH CRS 087°	Rwy ldg TDZE Arprt Elev	8002 20 20	JAL-209 [USN]	JACKSONVILLE NAS (TOWERS FIELD) (KNIP)
------------------	------------------	-------------------------------	------------------	---------------	--

▼ \* When ALS inop, increase vis CAT C to 1 mile, CAT D to 1¼ miles, CAT E to 1½ miles.

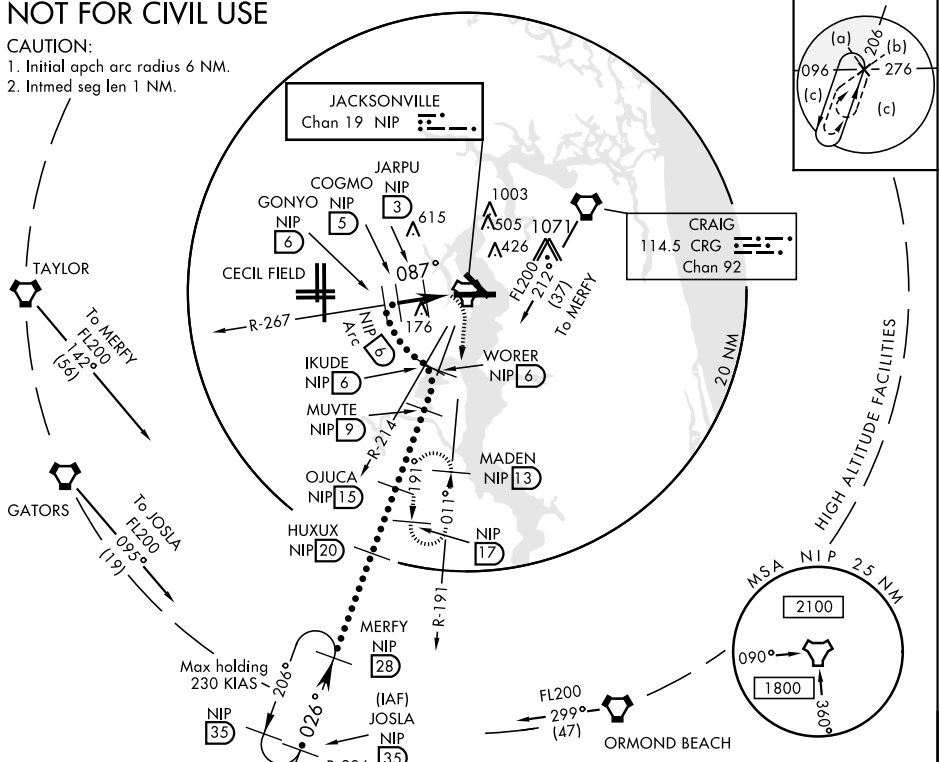
ALSF-1 MISSED APPROACH: Climbing right turn to 1800 via NIP TACAN R-191 direct MADEN and hold.

ATIS 281.0	JACKSONVILLE APP CON 123.8 377.05	NAVY JACKSONVILLE TOWER * 120.0 340.2	GND CON 128.6 (CTAF) 336.4	CLNC DEL 134.775 353.675	ASR/PAR
---------------	--------------------------------------	--	-------------------------------	-----------------------------	---------

## NOT FOR CIVIL USE

### CAUTION:

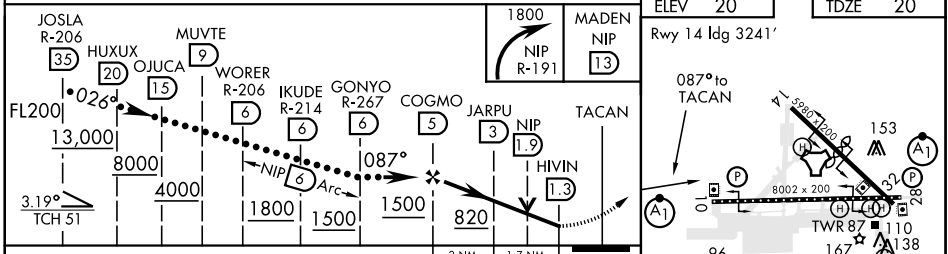
1. Initial apch arc radius 6 NM.
2. Intmed seg len 1 NM.



SE-3, 26 JUN 2014 to 24 JUL 2014

SE-3, 26 JUN 2014 to 24 JUL 2014

EMERG SAFE ALT 100 NM 2800



	ELEV 20		TDZE 20	
	Rwy 14 ldg 3241'			
CATEGORY	C	D	E	
S-10 *	420-¾	400 (400-¾)	420-1	400 (400-1)
CIRCLING	480-1½ 460 (500-1½)	580-2 560 (600-2)	860-3	840 (900-3)

HIRL 10-28 0, 14-32  
REIL Rwy 10-28, 32  
Lead-in lights