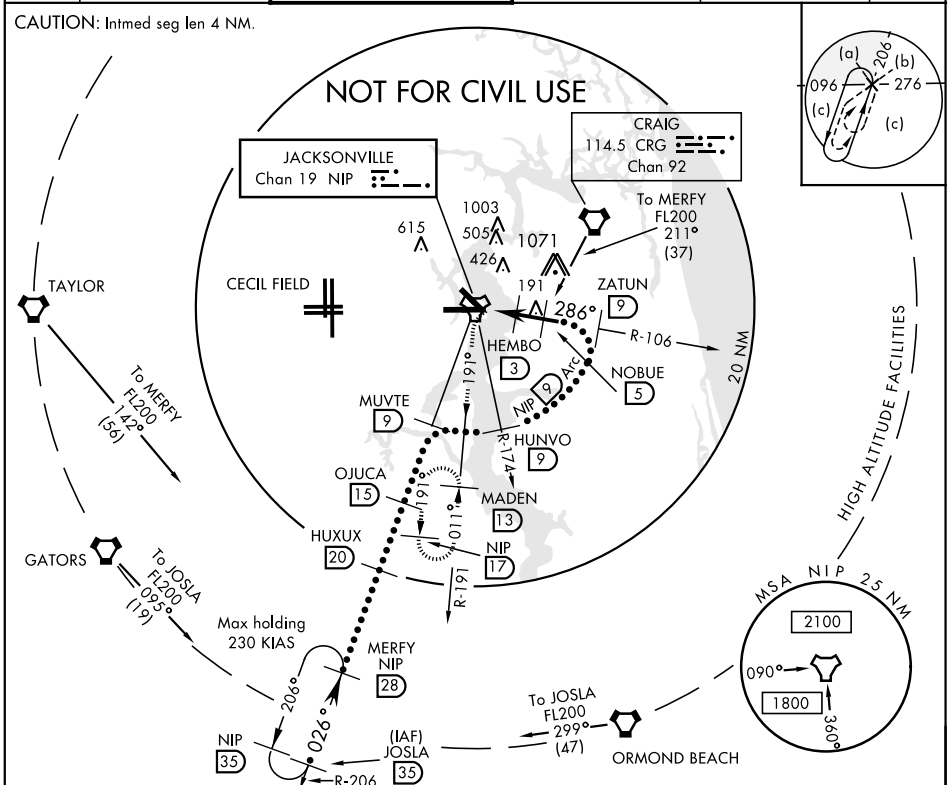


TACAN Chan 19	NIP 286°	APCH CRS 286°	Rwy ldg 8002	TDZE 12	Arpt Elev 20	JAL-209 [USN]	JACKSONVILLE NAS (TOWERS FIELD) (KNIP)
------------------	-------------	------------------	-----------------	------------	-----------------	---------------	--

⚠ \* When ALS inop, increase vis CAT C to 1 mile, CAT DE to 1½ miles.
 
 ALSF-1  

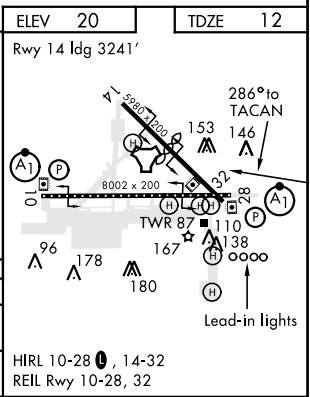
 MISSED APPROACH: Climb to 500 via R-106, then climbing left turn to 1800 via NIP TACAN R-191 to MADEN and hold.

ATIS 281.0	JACKSONVILLE APP CON 123.8 377.05	NAVY JACKSONVILLE TOWER* 120.0 340.2	GND CON 128.6 (CTAF) 336.4	CLNC DEL 134.775 353.675	ASR/PAR
---------------	--------------------------------------	---	-------------------------------	-----------------------------	---------



EMERG SAFE ALT 100 NM 2800

500 NIP R-106	1800 NIP R-191	MADEN NIP 13	HUNVO R-174	MUVTE R-206	OJUCA 20	JOSLA R-206 FL200 35
TACAN	HEMBO 3	NOBUE 5	ZATUN R-106 9	HUNVO 9	OJUCA 15	JOSLA 35
GRUEN 1.1	NIP 1.3	NIP 9	NIP 9	NIP 9	NIP 9	NIP 9
1.9 NM	2 NM					
CATEGORY	C	D	E			
S-28 *	400-¾	388 (400-¾)				
CIRCLING	480-1½ 460 (500-1½)	580-2 560 (600-2)	860-3 840 (900-3)			



SE-3, 26 JUN 2014 to 24 JUL 2014

SE-3, 26 JUN 2014 to 24 JUL 2014