

| | | |
|----------|-----------|-------------|
| APCH CRS | Rwy ldg | 8002 |
| | TDZE | 12 |
| | Arpt Elev | 20 |

AL-209 [USN]

JACKSONVILLE NAS (TOWERS FIELD) (KNIP)

▼ * When ALS inop, increase vis CAT ABCD to 1 mile.
 ** When ALS inop, increase vis CAT AB to 1 mile, CAT CD to 1½ miles.

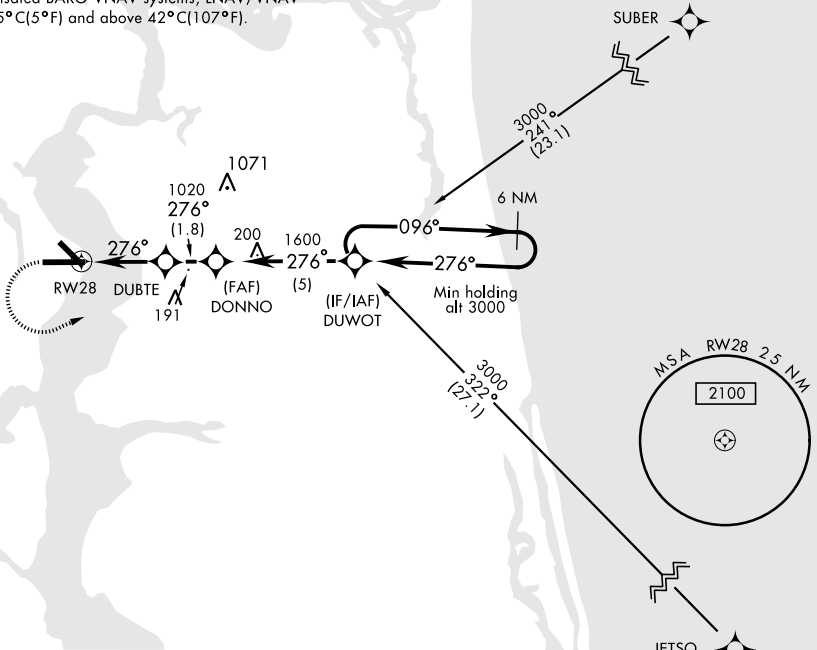


MISSED APPROACH: Climbing left turn to 3000 direct DUWOT and hold.

| | | | | | |
|--------------|----------------------|--------------------------|---------------------------|------------------------|---------|
| ATIS | JACKSONVILLE APP CON | NAVY JACKSONVILLE TOWER* | GND CON | CLNC DEL | ASR/PAR |
| 281.0 | 123.8 377.05 | 120.0 340.2 | 128.6 (CTAF) 336.4 | 134.775 353.675 | |

DME/DME RNP-0.3 NA.

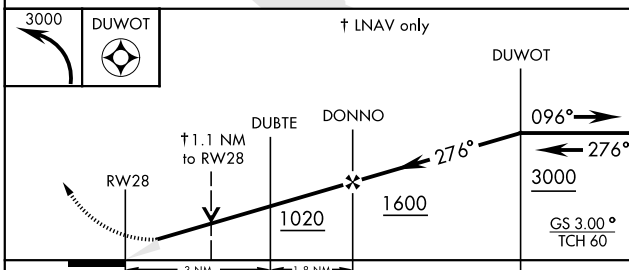
For uncompensated BARO-VNAV systems, LNAV/VNAV NA below -15°C(5°F) and above 42°C(107°F).



SE-3, 26 JUN 2014 to 24 JUL 2014

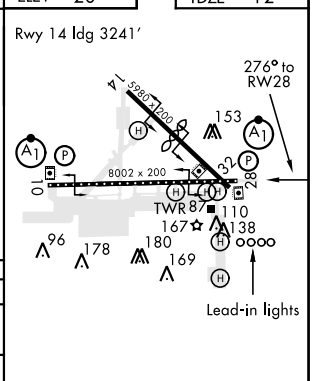
SE-3, 26 JUN 2014 to 24 JUL 2014

EMERGENCY SAFE ALT 100 NM 2800



| CATEGORY | A | B | C | D |
|---------------|-------|-------------|------------------------|----------------------|
| LNAV/VNAV DA* | 340-½ | 328 (400-½) | 340-¾ | 328 (400-¾) |
| LNAV MDA** | 420-½ | 408 (400-½) | 420-¾ | 408 (400-¾) |
| CIRCLING | 480-1 | 460 (500-1) | 480-1½ 460 (500-1½) | 580-2 560 (600-2) |

| | | | |
|------|----|------|----|
| ELEV | 20 | TDZE | 12 |
|------|----|------|----|



HIRL 10-28 0, 14-32
 REIL Rwy 10-28, 32