

TACAN NIP Chan <b>19</b>	APCH CRS <b>087°</b>	Rwy ldg TDZE Arprt Elev <b>8002 20</b>
--------------------------	----------------------	----------------------------------------

AL-209 [USN]

JACKSONVILLE NAS (TOWERS FIELD) (KNIP)

ALSF-1
 

 MISSED APPROACH: Climbing right turn to 1800 via NIP R-191 to MADEN and hold.

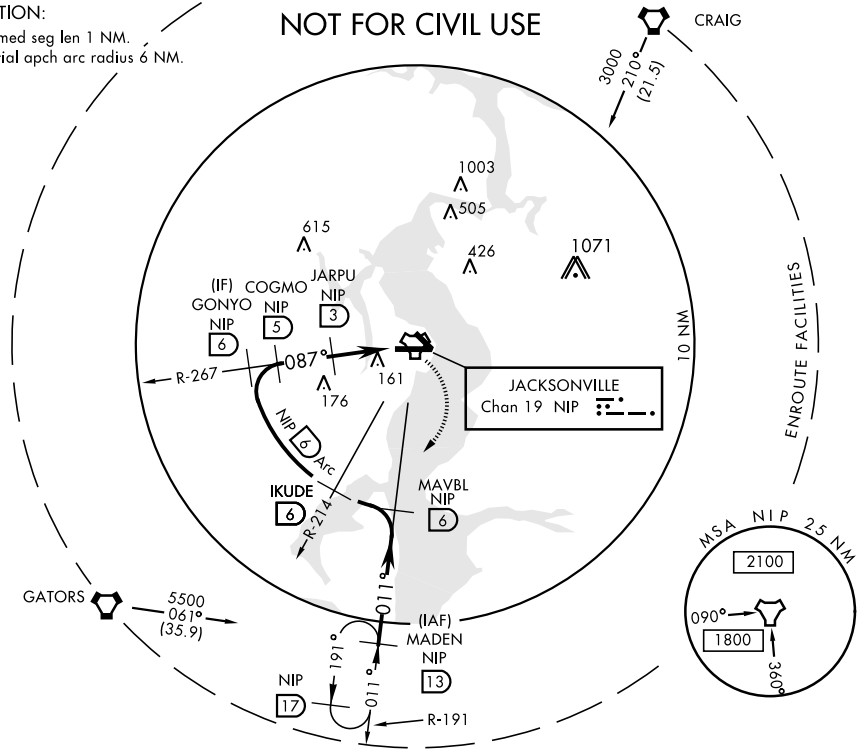
\*When ALS inop, increase vis CAT ABC to 1 mile, CAT D to 1 1/4 miles.

ATIS <b>281.0</b>	JACKSONVILLE APP CON <b>123.8 377.05</b>	NAVY JACKSONVILLE TOWER* <b>120.0 340.2</b>	GND CON <b>128.6</b> (CTAF) <b>336.4</b>	CLNC DEL <b>134.775</b> <b>0353.675</b>	ASR/PAR
-------------------	------------------------------------------	---------------------------------------------	------------------------------------------	-----------------------------------------	---------

**CAUTION:**

1. Intmed seg len 1 NM.
2. Initial apch arc radius 6 NM.

## NOT FOR CIVIL USE



SE-3, 26 JUN 2014 to 24 JUL 2014

SE-3, 26 JUN 2014 to 24 JUL 2014

EMERG SAFE ALT 100 NM 2800				
MADEN R-191 <b>13</b>	MAVBL R-191 <b>6</b>	IKUDE R-214 <b>6</b>	GONYO R-267 <b>6</b>	
COGMO <b>5</b>	JARPU <b>3</b>	1800 NIP R-191 <b>13</b>	MADEN NIP <b>13</b>	
3000	1800	1500	1500	
CATEGORY	A	B	C	D
S-10 *	420-1/2 400 (400-1/2)		420-3/4 400 (400-3/4)	
CIRCLING	480-1	460 (500-1)	480-1 1/2 460 (500-1 1/2)	580-2 560 (600-2)

ELEV 20	TDZE 20
---------	---------

Rwy 14 ldg 3241'

Lead-in lights

HIRL 10-28 **0**, 14-32  
REIL Rwy 10-28, 32