

(HOTAR.HOTAR1) 13290

ST-5570 (FAA)

HOTAR ONE ARRIVAL (RNAV)

JACKSONVILLE, FLORIDA

JACKSONVILLE APP CON
 119.0 127.0 322.4 335.6 (270°-090°)
 123.8 377.05 (181°-269°)
 124.9 308.4 (091°-180°)
 CECIL ATIS 125.275
 JACKSONVILLE EXECUTIVE AT CRAIG ATIS 125.4
 JACKSONVILLE INTL ATIS 125.85
 JACKSONVILLE NAS (TOWERS FIELD) ATIS 281.0
 MAYPORT NS (ADM DAVID L. MCDONALD FIELD) ATIS ★ 236.775
 NORTHEAST FLORIDA RGNL ATIS 119.625

ARRIVAL ROUTE DESCRIPTION

BASLE TRANSITION (BASLE.HOTAR1)

From JABOR on track 191° to HOTAR.

LANDING JAX: From HOTAR on track 263° to YEJWO.

Expect radar vectors to an ILS or LOC final approach course.

LANDING NRB and CRG: From HOTAR on track 210° to LESVE, then on 213° heading or as assigned by ATC.

Expect radar vectors to final approach course.

LANDING SGJ: From HOTAR on track 202° to HABIK, then on 203° heading or as assigned by ATC. Expect radar vectors to final approach course.

LANDING VQQ and NIP: From HOTAR on track 202° to HEBIN, then on 253° heading or as assigned by ATC. Expect radar vectors to final approach course.

Expect radar vectors to final approach course.

NOTE: YEJWO Transition-ATC assigned only.

JACKSONVILLE INTL

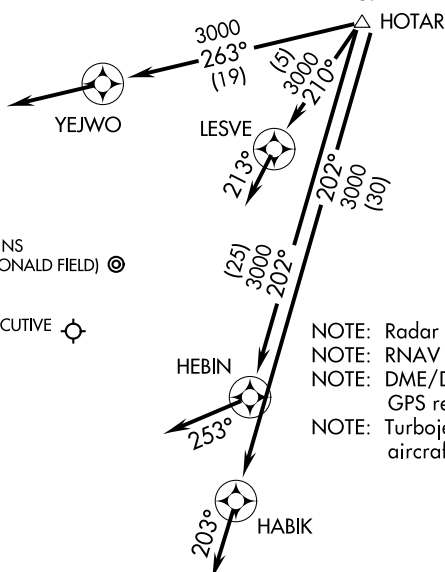
MAYPORT NS
(ADM DAVID L. MCDONALD FIELD)

JACKSONVILLE EXECUTIVE
AT CRAIG

JACKSONVILLE NAS
(TOWERS FIELD)

CECIL

NORTHEAST FLORIDA
RGNL



NOTE: Radar required.
 NOTE: RNAV 1.
 NOTE: DME/DME/IRU or GPS required.
 NOTE: Turbojet and turboprop aircraft only.

NOTE: Chart not to scale.

SE-3, 26 JUN 2014 to 24 JUL 2014

SE-3, 26 JUN 2014 to 24 JUL 2014

HOTAR ONE ARRIVAL (RNAV)

(HOTAR.HOTAR1) 13290

JACKSONVILLE, FLORIDA