

TAYLOR TWO ARRIVAL (TAY.TAY2)

ST-5570 (FAA)

JACKSONVILLE, FLORIDA

SE-3, 26 JUN 2014 to 24 JUL 2014

SEMINOLE TRANSITION (SZW.TAY2): From over SZW VORTAC via SZW R-089 and TAY R-275 to TAY VORTAC. Thence. . . .

. . . . From over TAY VORTAC via TAY R-070 to CROKR INT, thence to the CRG VORTAC via CRG R-301. Expect radar vectors to final approach course after CROKR INT.

JACKSONVILLE APP CON
127.0 322.4
CECIL ATIS
125.275

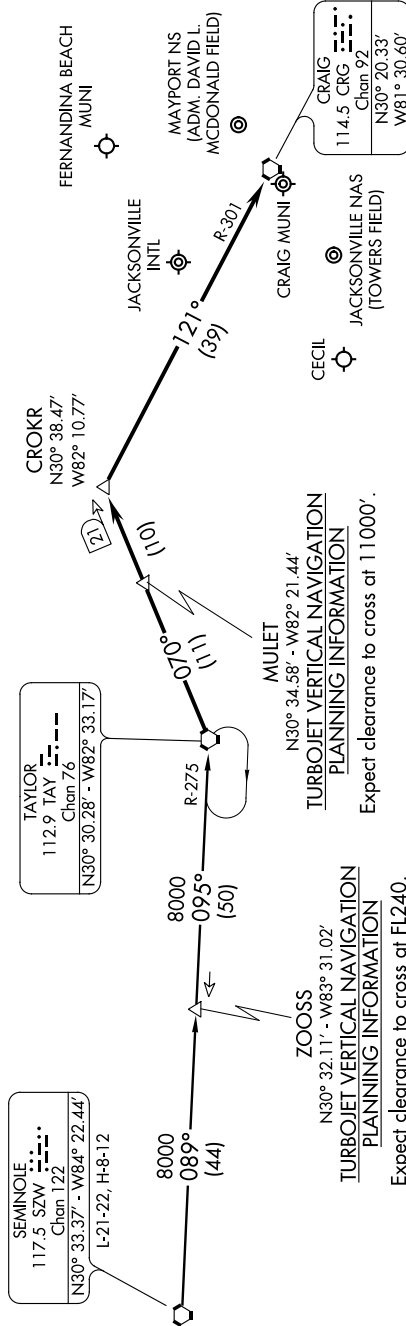
CRAIG MUNI ATIS
125.275

JACKSONVILLE INTL ATIS
125.4

JACKSONVILLE NAS ATIS
125.85

281.0
MAYPORT NS ATIS ★
236.775

FERNANDINA BEACH AWOS-3
118.075



TURBOJET VERTICAL NAVIGATION PLANNING INFORMATION
Expect clearance to cross at 11000'.

TURBOJET VERTICAL NAVIGATION PLANNING INFORMATION
Expect clearance to cross at FL240.

NOTE: DME Required.
NOTE: Chart not to scale.

TAYLOR TWO ARRIVAL (TAY.TAY2)

JACKSONVILLE, FLORIDA

SE-3, 26 JUN 2014 to 24 JUL 2014