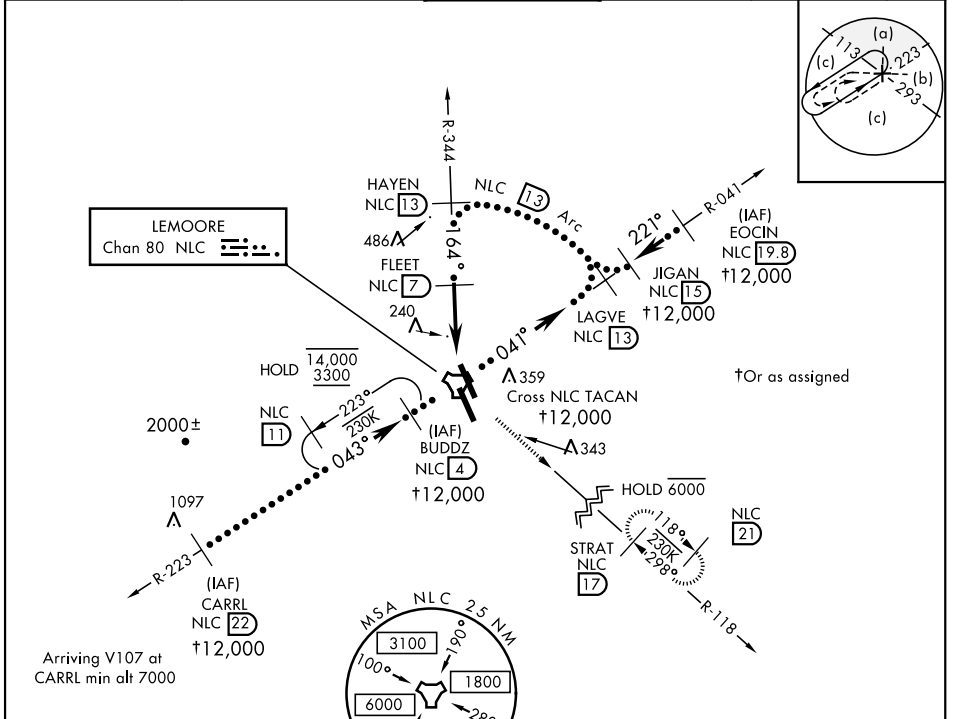


# HI-TACAN RWY 14L

TACAN NLC Chan <b>80</b>	APCH CRS <b>164°</b>	Rwy ldg <b>13,502</b> TDZE <b>219</b> Arpt Elev <b>228</b>	AL-5067 [USN]	LEMOORE NAS (REEVES FIELD) (KNLC)
-----------------------------	-------------------------	--	---------------	-----------------------------------

**MISSED APPROACH:** Climb to 700 then climbing left turn to 2000 via heading 142°, intercept NLC R-118 to STRAT and hold.

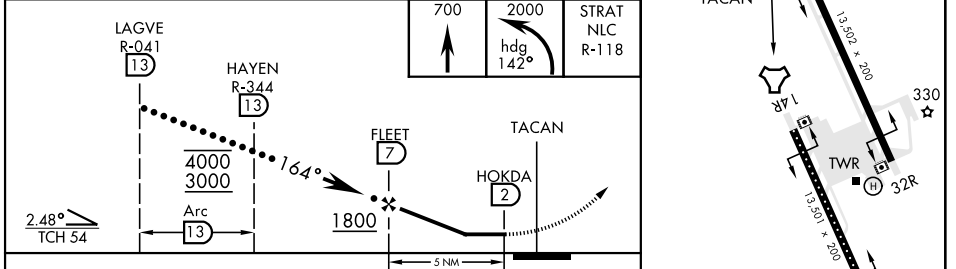
ATIS★ <b>121.575 327.15</b>	LEMOORE APP CON <b>124.1N 118.15S 269.025</b>	LEMOORE TOWER ★ <b>128.3 340.2</b>	GND CON <b>121.65 305.2</b>	CLNC DEL <b>124.1 371.9</b>	ASR/PAR
--------------------------------	--	---------------------------------------	--------------------------------	--------------------------------	---------



SW-2, 25 FEB 2021 to 25 MAR 2021

SW-2, 25 FEB 2021 to 25 MAR 2021

ELEV 228	TDZE 219
----------	----------



EMERG SAFE ALT 100 NM 16,500	<table border="1"> <tr> <td>700</td> <td>2000</td> <td>STRAT NLC R-118</td> </tr> <tr> <td>↑</td> <td>hdg 142°</td> <td></td> </tr> </table>			700	2000	STRAT NLC R-118	↑	hdg 142°	
700	2000	STRAT NLC R-118							
↑	hdg 142°								
CATEGORY	C	D	E						
S-14L	560/55	340	(400-1)						
CIRCLING	680-1½ 451 (500-1½)	780-2	551 (600-2)						

TDZL/CL Rwy 32L  
REIL Rwy 14L-32R, 14R-32L  
HIRL Rwy 14L-32R, 14R-32L

# HI-TACAN RWY 14L