

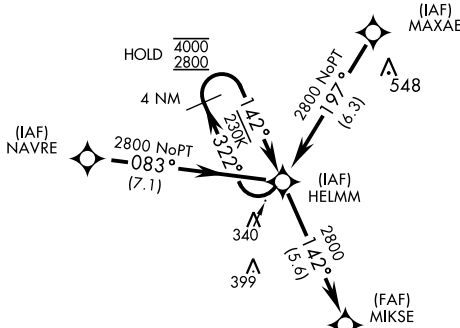
RNAV (GPS) RWY 14R

WAAS Chan 80286 W14B	APCH CRS 142°	Rwy Idg 13,501 TDZE 228 Arpt Elev 228
--	-------------------------	--

AL-5067 [USN]

LEMOORE NAS (REEVES FIELD) (KNLC)

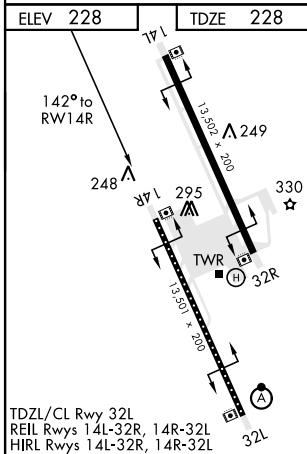
<p>V DME/DME RNP-0.3 NA</p>		<p>MISSED APPROACH: Climb to 2000 direct PHROG and hold.</p>			
<p>ATIS ★ 121.575 327.15</p>	<p>LEMOORE APP CON 124.1N 118.15S 269.025</p>	<p>LEMOORE TOWER ★ 128.3 340.2</p>	<p>GND CON 121.65 305.2</p>	<p>CLNC DEL 124.1 371.9</p>	<p>ASR/PAR</p>



Simultaneous approaches authorized.
 LNAV procedure NA during Simultaneous operations.
 Use of FD or AP providing RNAV track guidance required during simultaneous operations.

For uncompensated Baro-VNAV systems, LNAV/VNAV procedure NA below -15°C (5°F) and above 54°C (130°F).

EMER SAFE ALT 100 NM 16,500



	HELMM	MIKSE	PHROG
	322°	142°	2000
	2800	2800	PHROG
		7.9 NM	↑ LNAV Only
GP 3.00° TCH 51			
CATEGORY	A	B	C
LPV DA		429/40	200 (200-34)
LNAV/VNAV DA		479/40	250 (300-34)
LNAV MDA	660/55	431 (500-1)	660-1¼ 431 (500-1¼)
CIRCLING	680-1	451 (500-1)	680-1½ 780-2 451 (500-1½) 551 (600-2)

RNAV (GPS) RWY 14R

SW-2, 25 FEB 2021 to 25 MAR 2021

SW-2, 25 FEB 2021 to 25 MAR 2021