

REEVES-THREE DEPARTURE (REVES3 • NLC)

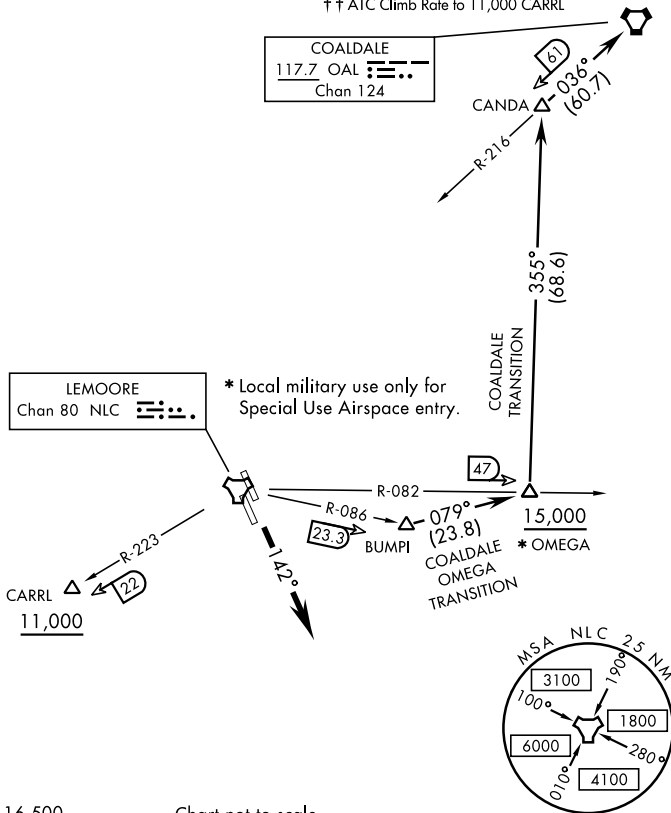
SHL-5067 [USN]

LEMOORE, CALIFORNIA

ATIS ★ 121.575 327.15
 CLNC DEL
 124.1 371.9
 GND CON
 121.65 305.2
 LEMOORE TOWER ★
 128.3 340.2
 (Rwy 14L, 32L)
 128.3 360.2
 (Rwy 14R, 32R)
 LEMOORE DEP CON
 124.1 318.8 (N)
 118.15 318.8 (S)

Rwy	Knots	60	120	180	240	300	360
†14L/R	V/V(fpm)	320	640	960	1280	1600	1920
††14L/R	V/V(fpm)	364	728	1092	1456	1820	2184

† ATC Climb Rate to 15,000 OMEGA
 †† ATC Climb Rate to 11,000 CARRL



EMERG SAFE ALT 100 NM 16,500

Chart not to scale

DEPARTURE ROUTE DESCRIPTION

TAKE-OFF RUNWAY 14L/14R: Climb to 2000 via heading 142° then radar vectors to join assigned transition or route.

CARRL TRANSITION (REVES3.CARRL): From over CARRL thence as filed. Cross CARRL at or above 11,000.

COALDALE TRANSITION (REVES3.OAL): From over BUMPI direct OMEGA, direct CANDA, direct COALDALE VORTAC. Cross OMEGA at or above 15,000.

OMEGA TRANSITION (REVES3.OMEGA): From over BUMPI direct OMEGA thence as filed.

LOST COMMUNICATIONS: If no transmissions are received within 8 DME of NLC TACAN, fly departure heading to intercept NLC 10 DME arc, arc to respective departure radial then via departure radial to assigned departure fix. Then via assigned route. Once established on departure radial climb to filed altitude.

REEVES-THREE DEPARTURE (REVES3 • NLC)

LEMOORE, CALIFORNIA

Amdt 1 24MAY18

LEMOORE NAS (REEVES FIELD) (KNLC)

SW-2, 25 FEB 2021 to 25 MAR 2021

SW-2, 25 FEB 2021 to 25 MAR 2021