

TACAN RWY 14L

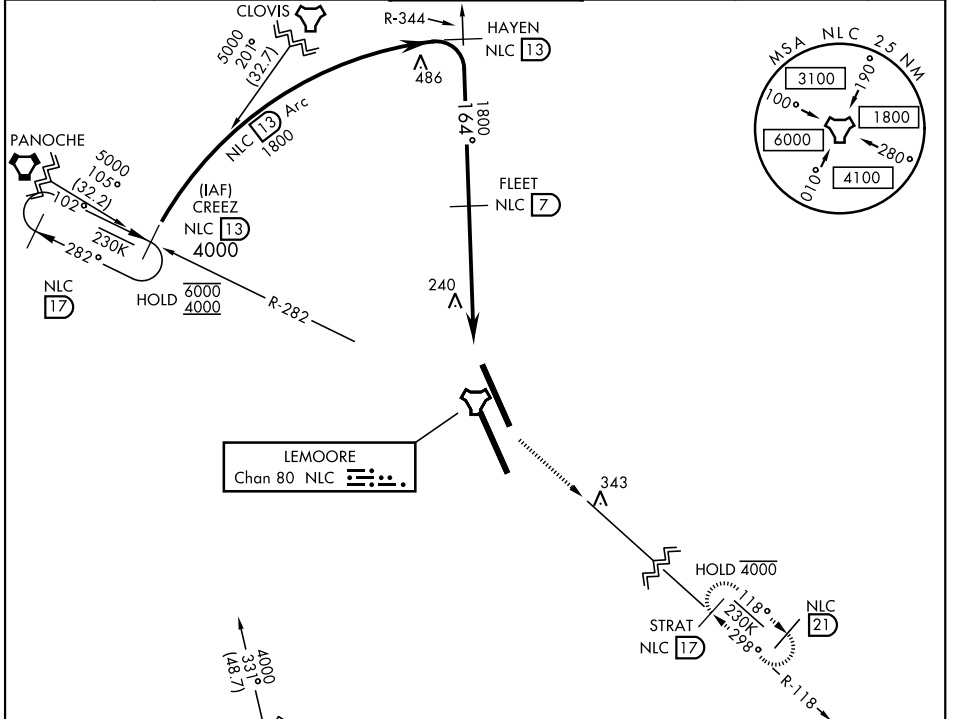
TACAN Chan 80	APCH CRS 164°	Rwy Ldg TDZE Arprt Elev 13,502 219 228
-------------------------	-------------------------	--

AL-5067 [USN]

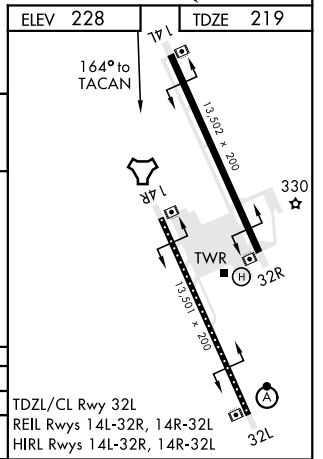
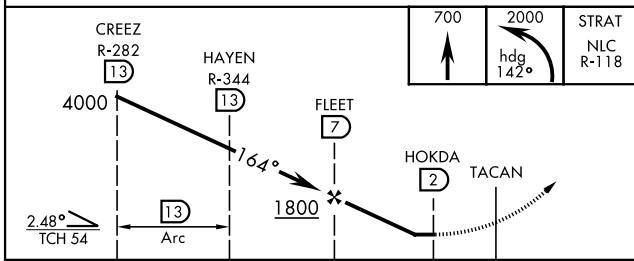
LEMOORE NAS (REEVES FIELD) (KNLC)

MISSED APPROACH: Climb to 700 then climbing left turn to 2000 via heading 142°, intercept NLC TACAN R-118 to STRAT and hold.

ATIS ★ 121.575 327.15	LEMOORE APP CON 124.1N 118.15S 269.025	LEMOORE TOWER ★ 128.3 340.2	GND CON 121.65 305.2	CLNC DEL 124.1 371.9	ASR/PAR
---------------------------------	--	---------------------------------------	--------------------------------	--------------------------------	---------



EMERG SAFE ALT 100 NM 16,500



CATEGORY	A	B	C	D
S-14L	560/55		340	(400-1)
CRCLING	680-1	451 (500-1)	680-1½ 451 (500-1½)	780-2 551 (600-2)

TDZL/CL Rwy 32L
REIL Rwys 14L-32R, 14R-32L
HIRL Rwys 14L-32R, 14R-32L

TACAN RWY 14L

SW-2, 25 FEB 2021 to 25 MAR 2021

SW-2, 25 FEB 2021 to 25 MAR 2021