

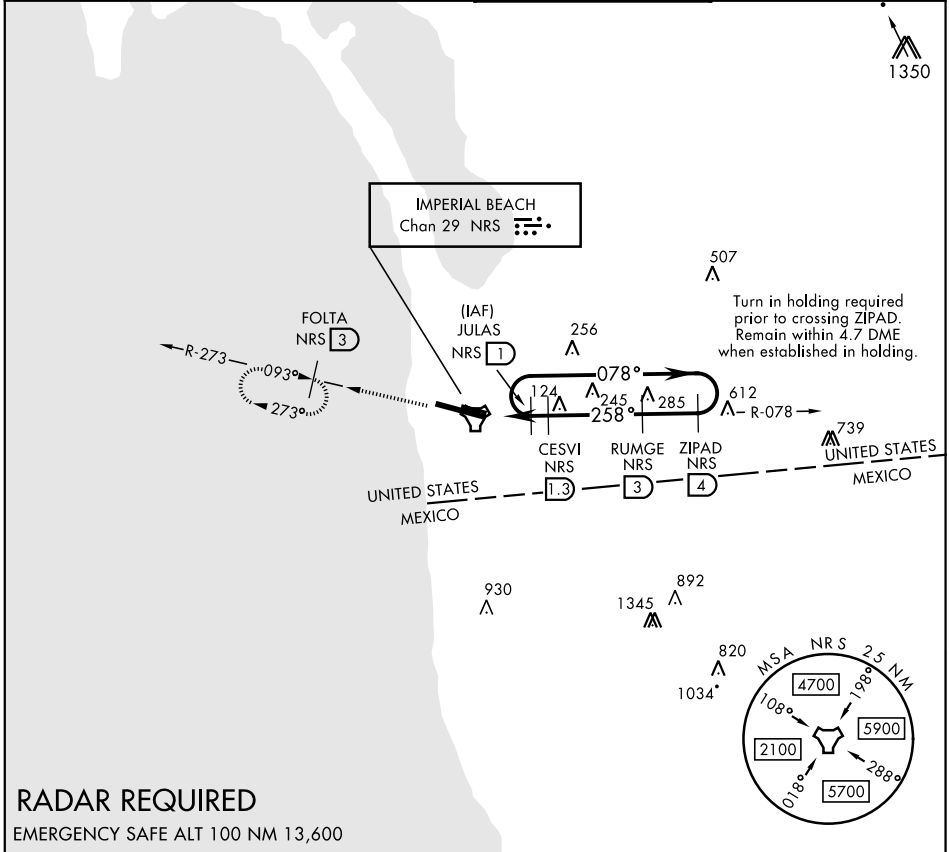
# COPTER TACAN RWY 27

AL-307 [USN] IMPERIAL BEACH NOLF (REAM FIELD) (KNRS)

TACAN Chan <b>29</b>	NRS APCH CRS <b>258°</b>	Rwy Idg THRE Arprt Elev <b>4997</b> <b>20</b> <b>24</b>
-------------------------	--------------------------------	------------------------------------------------------------------------

▼ Max airspeed 90 KIAS. MISSED APPROACH: Climb to 1600 via NRS TACAN R-078 to NRS, then via NRS R-273 to FOLTA, continue climb-in-hold to 1600. Remain within 5.2 DME when established in holding.

ATIS ★ /ASOS <b>276.2</b>	SOCAL APP CON <b>125.15 317.55</b>	IMPERIAL BEACH TOWER ★ <b>120.65 239.25</b>	GND CON <b>285.575</b>
------------------------------	---------------------------------------	------------------------------------------------	---------------------------



SW-3, 25 FEB 2021 to 25 MAR 2021

SW-3, 25 FEB 2021 to 25 MAR 2021

<p>JULAS R-078 1900 078° →</p> <p>← 258° ZIPAD R-078</p> <p>RUMGE R-078</p> <p>TACAN CISAV 1900 740 1600</p> <p>8 NM ← 1.7 NM →</p>		<p>Remain within 4.7 DME</p> <p>1600 NRS R-078</p> <p>NRS R-273</p>	<p>ELEV 24</p> <p>THRE 20</p>
<p>VDA CESVI to hld</p> <p>5.39° TCH 50</p>			
CATEGORY	COPTER		
H-27	360-1 340 (400-1)		
HIRL Rwy 9-27			

# COPTER TACAN RWY 27