

OXNARD, CALIFORNIA

ILS Y or LOC/DME RWY 21

LOC/DME I-RRG 109.3 Chan 30	APCH CRS 212°	Rwy Idg 11,102 TDZE 13 Arprt Elev 13
------------------------------------------	-------------------------	-----------------------------------------------------------------

AL-925 [USN]

POINT MUGU NAS
(NAVAL BASE VENTURA CO)(KNTD)

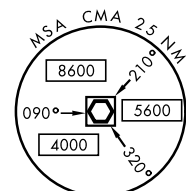
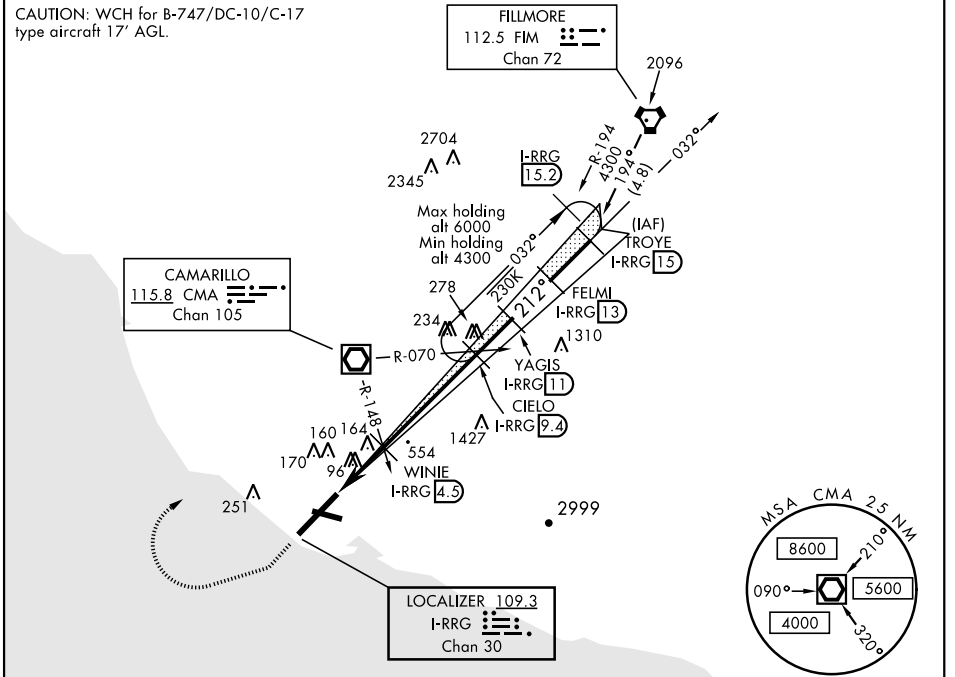
DME or RADAR required.



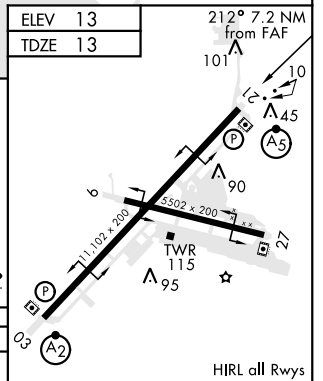
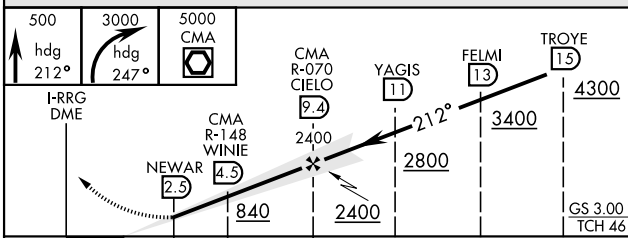
MISSED APPROACH: Climb to 500 via hdg 212°, then climbing right turn to 3000 via hdg 247°, then climbing right turn to 5000 direct CMA VOR/DME, then via CMA R-070 to CIELO and hold.

ATIS ★ 125.55 363.05	POINT MUGU APP CON 128.65 307.275	POINT MUGU TOWER ★ 124.85 290.375	GND CON 121.6 360.2	CLNC DEL 120.75 279.55	ASR/ PAR
--------------------------------	---------------------------------------------	---------------------------------------------	-------------------------------	----------------------------------	-------------

CAUTION: WCH for B-747/DC-10/C-17 type aircraft 17' AGL.



EMERG SAFE ALT 100 NM 12,100



CATEGORY	A	B	C	D
S-ILS 21*	213-½ 200 (200-½)			
S-LOC 21**	420-½	407 (500-½)	420-¾	407 (500-¾)
CIRCLING ***	440-1	480-1	480-1½	580-2
	427 (500-1)	467 (500-1)	467 (500-1½)	567 (600-2)

FAF to MAP 6.7 NM					
Knots	60	90	120	150	180
Min:Sec	6:54	4:36	3:27	2:46	2:18

OXNARD, CALIFORNIA
Amdt 3 31DEC20

34°07'N-119°07'W

POINT MUGU NAS (KNTD)
(NAVAL BASE VENTURA CO)

ILS Y or LOC/DME RWY 21

SW-3, 25 FEB 2021 to 25 MAR 2021

SW-3, 25 FEB 2021 to 25 MAR 2021