

WAAS CH 49229 W29A	APP CRS 291°	Rwy Idg TDZE Apt Elev	5091 1989 1989
--	------------------------	-----------------------------	---

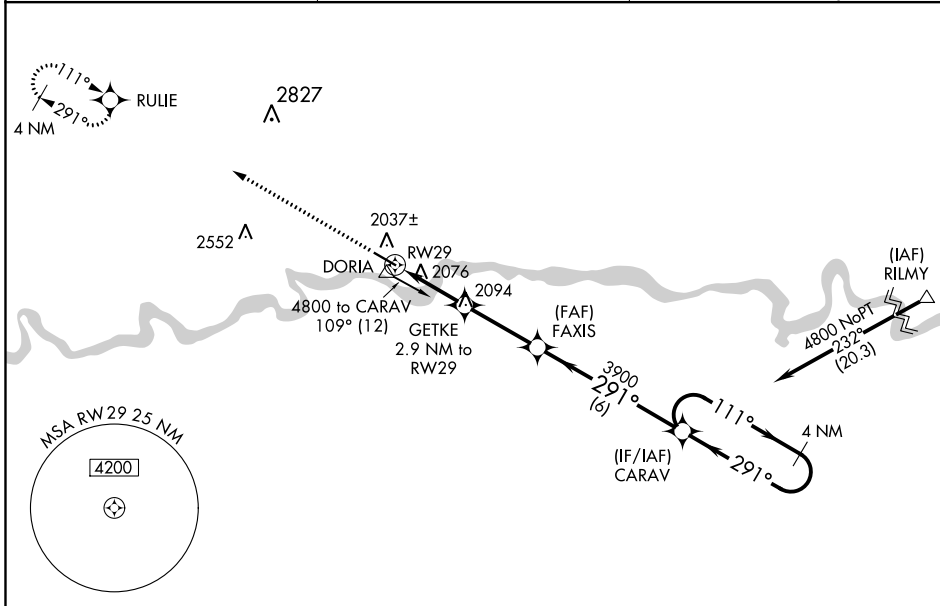
RNAV (GPS) RWY 29

L M CLAYTON (OLF')

⚠ For uncompensated Baro-VNAV systems, LNAV/VNAV NA below -18°C (0°F) or above 54°C (130°F). DME/DME RNP-0.3 NA. When local altimeter setting not received, use Glasgow altimeter setting and increase all DA 141 feet and all MDA 160 feet and increase LPV all Cats visibility $\frac{3}{8}$ mile, LNAV/VNAV all Cats visibility $\frac{1}{2}$ mile, LNAV Cats C/D visibility $\frac{1}{2}$ mile, and Circling Cats C/D visibility $\frac{1}{4}$ mile. Baro-VNAV and VDP NA with Glasgow altimeter setting.

MISSED APPROACH:
Climb to 4500 direct RULIE and hold.

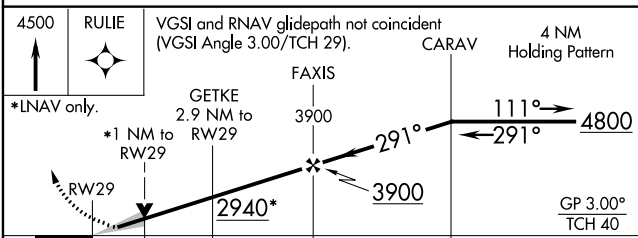
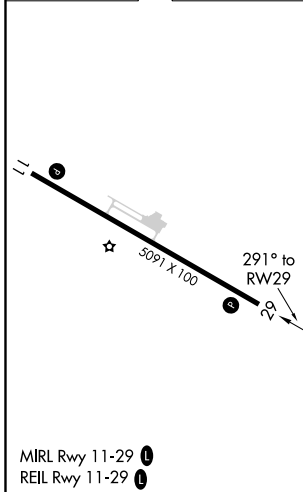
ASOS 118.325	SALT LAKE CENTER 126.85 305.2	UNICOM 122.8 (CTAF) 0
------------------------	---	---------------------------------



NW-1, 25 FEB 2021 to 25 MAR 2021

NW-1, 25 FEB 2021 to 25 MAR 2021

ELEV 1989	TDZE 1989
-----------	-----------



CATEGORY	A	B	C	D
LPV DA		2189- $\frac{3}{4}$	200 (200- $\frac{3}{4}$)	
LNAV/VNAV DA		2239- $\frac{7}{8}$	250 (300- $\frac{7}{8}$)	
LNAV MDA		2340-1	351 (400-1)	
CIRCLING	2480-1	491 (500-1)	2480-1 $\frac{1}{2}$ 491 (500-1 $\frac{1}{2}$)	2540-2 551 (600-2)