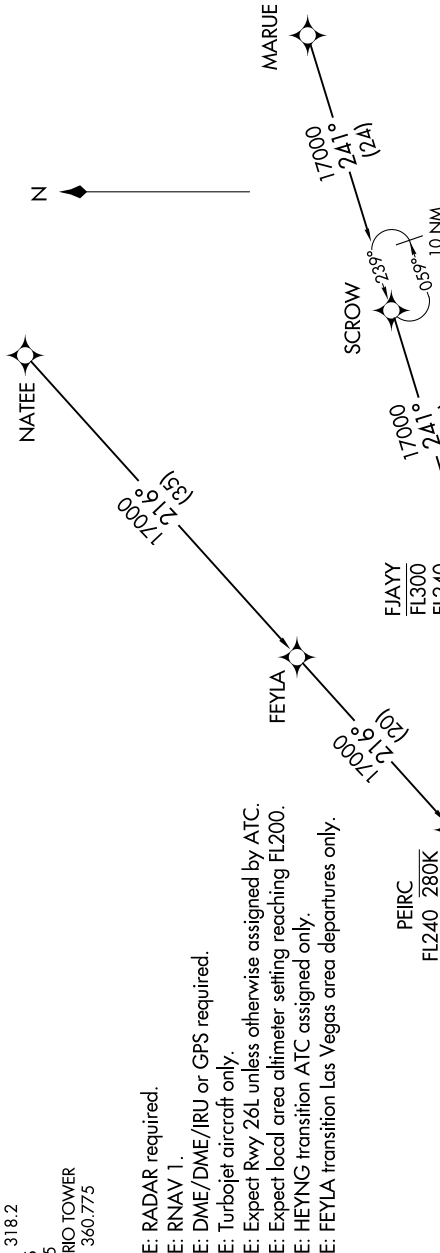


SW-3, 25 FEB 2021 to 25 MAR 2021

SOCAL APP CON
127.0 318.2
D-ATIS
124.25
ONTARIO TOWER
120.6 360.775

NOTE: RADAR required.
NOTE: RNAV 1.
NOTE: DME/DME/IRU or GPS required.
NOTE: Turbojet aircraft only.
NOTE: Expect local area altimeter setting FL200.
NOTE: HEYNG transition ATC assigned only.
NOTE: FEYLA transition Las Vegas area departures only.



NOTE: Chart not to scale.

- FEYLA TRANSITION (FEYLA.JCKIE2)
- HEYNG TRANSITION (HEYNG.JCKIE2)
- MARUE TRANSITION (MARUE.JCKIE2)
- NATEE TRANSITION (NATEE.JCKIE2)

(CONTINUED ON FOLLOWING PAGE)

JCKIE
FL190
17000
See following
page for
arrival route.

SW-3, 25 FEB 2021 to 25 MAR 2021