


WAAS CH 45807 W08B	APP CRS 078°	Rwy Idg 11200 TDZE 944 Apt Elev 944
---------------------------------	------------------------	--

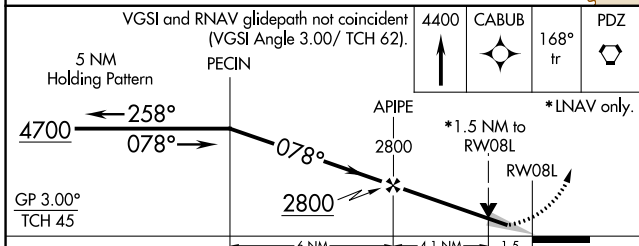
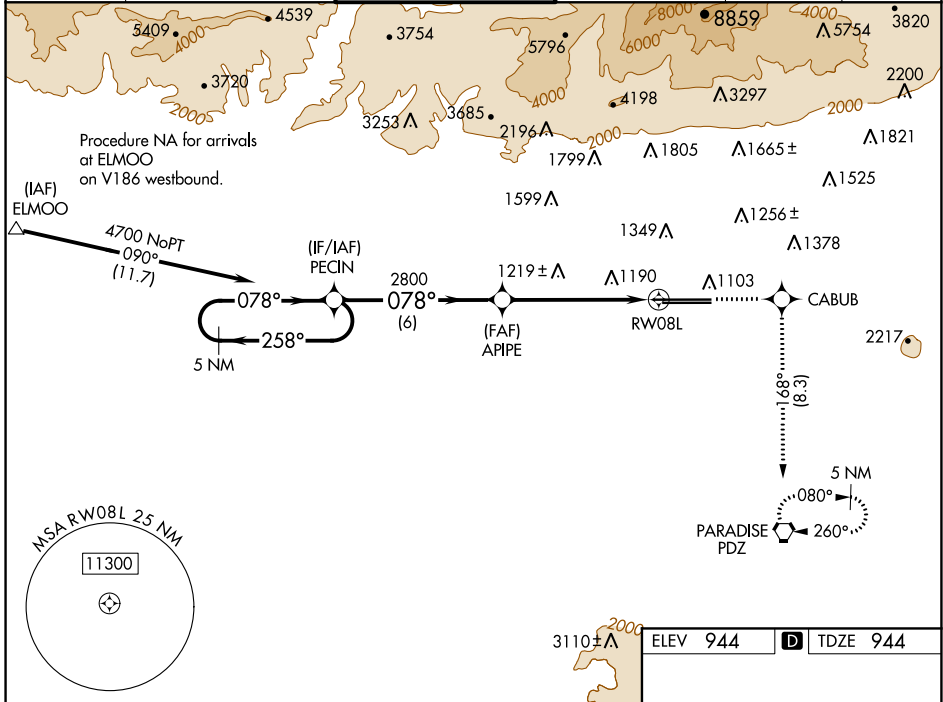
RNAV (GPS) Y RWY 8L

ONTARIO INTL (ONT)

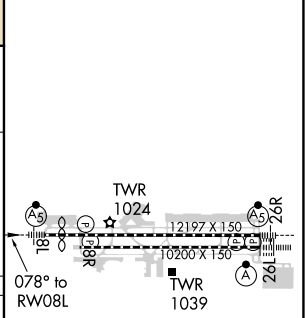
▽ For uncompensated Baro-VNAV systems, LNAV/VNAV NA below -16°C (4°F) or above 47°C (116°F). Circling NA north of Rwy 8L-26R.
DME/DME RNP -0.3 NA. For inoperative MALSR increase LPV visibility all Cats to RVR 6000.

MALSR  **MISSED APPROACH:** Climb to 4400 direct CABUB and on track 168° to PDZ VORTAC and hold, continue climb-in-hold to 4700.

D-ATIS 124.25	SOCAL APP CON 127.0 318.2	ONTARIO TOWER 120.6 360.775	GND CON 121.9 257.8	CLNC DEL 118.1	CPDLC
-------------------------	-------------------------------------	---------------------------------------	-------------------------------	--------------------------	-------



ELEV 944	D TDZE 944
----------	-------------------



CATEGORY	A	B	C	D
LPV DA		1266/30	322 (400-5%)	
LNAV/VNAV DA		1520-1½	576 (600-1½)	
LNAV MDA	1480/24	536 (600-½)	1480/55	536 (600-1)
C CIRCLING	1480-1	536 (600-1)	1540-1½	1600-2
			596 (600-1½)	656 (700-2)

TDZ/CL Rws 8L and 26L
HIRL Rws 8L-26R and 8R-26L

SW-3, 25 FEB 2021 to 25 MAR 2021

SW-3, 25 FEB 2021 to 25 MAR 2021