

BULLZ SIX ARRIVAL (RNAV) Arrival Routes

EC-3, 26 JUN 2014 to 24 JUL 2014

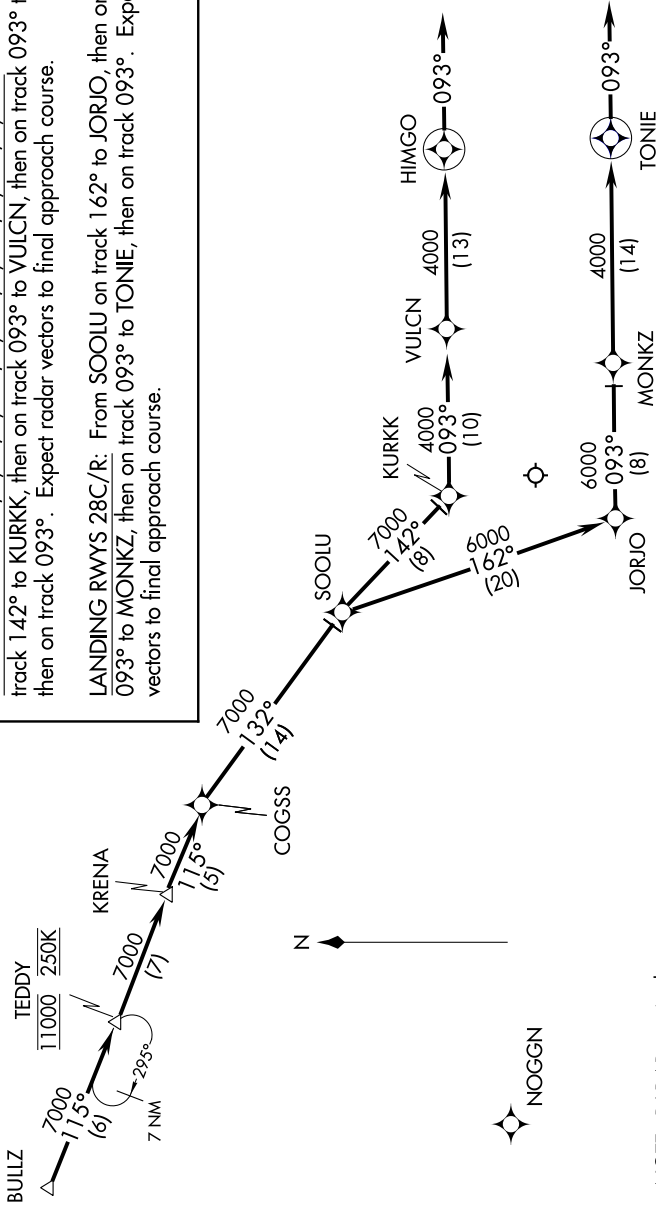
ARRIVAL ROUTE DESCRIPTION

From BULLZ on track 115° to cross TEDDY at 11000 at 250K, then on track 115° to KRENA, then on track 115° to COGSS, then on track 132° track to SOOLU.

LANDING RWYS 4L/R, 9L/R, 10L/C, 14L/R, 22L/R, 27L/R, 32R: From SOOLU on track 142° to KURKK, then on track 093° to VULCN, then on track 093° to HIMGO, then on track 093°. Expect radar vectors to final approach course.

LANDING RWYS 28C/R: From SOOLU on track 162° to JORJO, then on track 093° to MONKZ, then on track 093° to TONIE, then on track 093°. Expect radar vectors to final approach course.

ATIS
135.4 282.225
CHICAGO APP CON
119.0 393.1



NOTE: RADAR required.
NOTE: RNAV 1.
NOTE: DME/DME/IRU or GPS required.

NOTE: Chart not to scale.

BULLZ SIX ARRIVAL (RNAV) Arrival Routes

EC-3, 26 JUN 2014 to 24 JUL 2014