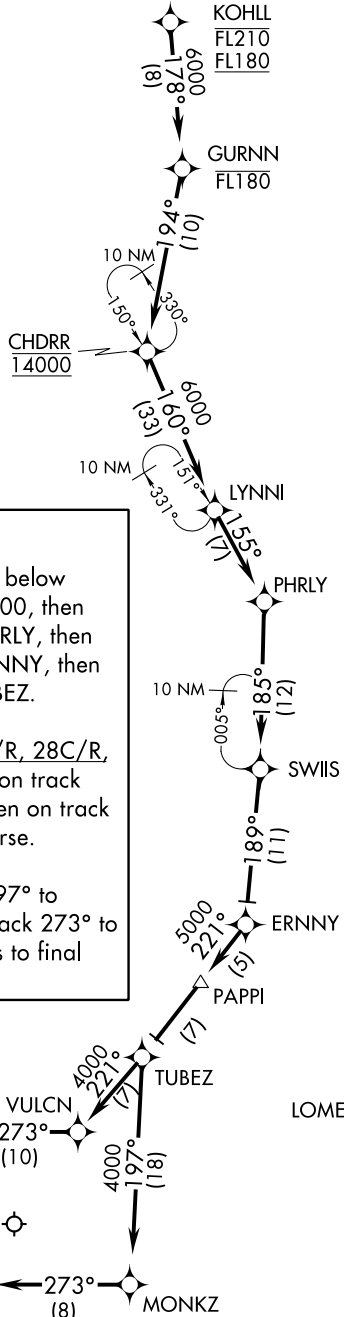


ERNNY TWO ARRIVAL (RNAV) Arrival Routes

CHICAGO APP CON
119.0 393.1
ATIS
135.4 282.225

- NOTE: Radar required.
- NOTE: RNAV 1.
- NOTE: DME/DME/IRU or GPS required.
- NOTE: Landing Rwy 4L/R, 14L/R, 22L/R, 27L/R, 28C/R, 32R: Expect radar vectors to final approach course after ERNNY.



ARRIVAL ROUTE DESCRIPTION

From KOHLL on track 178° to cross GURNN at or below FL180, then on track 194° to cross CHDRR at 14000, then on track 160° to LYNNI, then on track 155° to PHRLY, then on track 185° to SWIIS, then on track 189° to ERNNY, then on track 221° to PAPPI, then on track 221° to TUBEZ.

LANDING RWYS 4L/R, 9L/R, 14L/R, 22L/R, 27L/R, 28C/R, 32R: From TUBEZ on track 221° to VULCN, then on track 273° to KURKK, then on track 273° to BAMBB, then on track 273°. Expect radar vectors to final approach course.

LANDING RWYS 10L/C: From TUBEZ on track 197° to MONKZ, then on track 273° to JORJO, then on track 273° to POSSM, then on track 273°. Expect radar vectors to final approach course.

NOTE: Chart not to scale.

ERNNY TWO ARRIVAL (RNAV) Arrival Routes

EC-3, 26 JUN 2014 to 24 JUL 2014

EC-3, 26 JUN 2014 to 24 JUL 2014