

LOC/DME I-SXH	APP CRS	Rwy Idg	10540
108.95	093°	TDZE	669
Chan 26(Y)		Apt Elev	672

# ILS RWY 10C (CAT II & III)

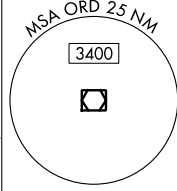
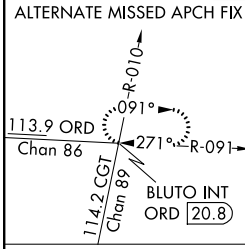
CHICAGO-O'HARE INTL (ORD)

**Simultaneous approach authorized with Rwy 9L/R and Rwy 10L. DME or Radar required.**



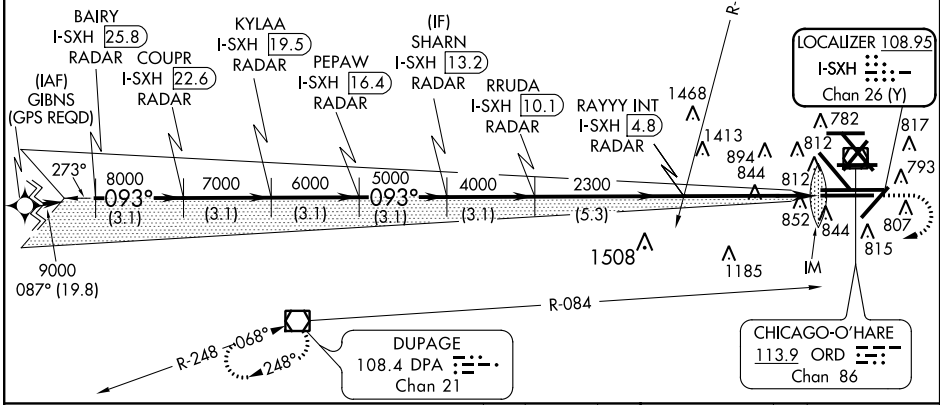
**MISSED APPROACH:** Climb to 1200 then climbing right turn to 4000 on DPA VOR/DME R-084 to DPA VOR/DME and hold.

ATIS	CHICAGO APP CON	O'HARE TOWERS				GND CON	(TWR CENTER)
135.4		128.15	348.0	(Rwy 9L/27R) (NORTH)	124.125	(TWR NORTH)	121.75 (OBND)
282.225	119.0 393.1	120.75	121.15	126.9 132.7 348.0 (CENTER)	226.675	(ALL TWRs)	121.9 (IBND)
							134.15 (Rwy 10C/28C)



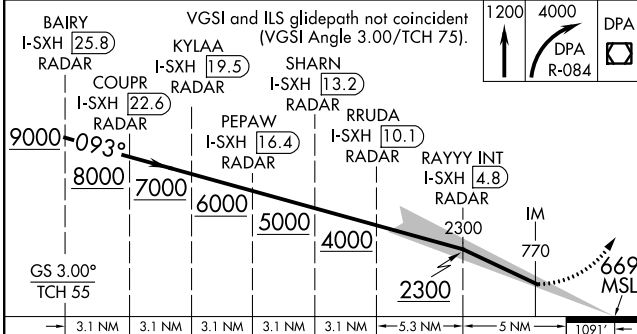
CINCL DEL  
121.6

**GPS or RADAR REQUIRED**

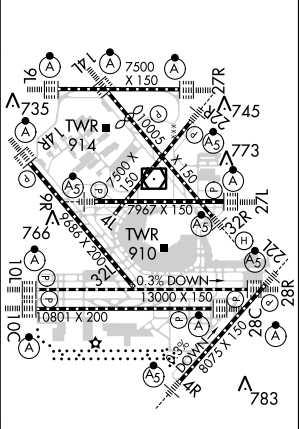


EC-3, 26 JUN 2014 to 24 JUL 2014

EC-3, 26 JUN 2014 to 24 JUL 2014



ELEV 672	TDZE 669
----------	----------



CATEGORY	A	B	C	D
S-ILS 10C	CAT II RA 80/12 100 DA 769			
S-ILS 10C	CAT IIIa RVR 07			
S-ILS 10C	CAT IIIb RVR 06			
S-ILS 10C	CAT IIIc NA			

**CATEGORY II and III ILS - SPECIAL AIRCREW & AIRCRAFT CERTIFICATION REQUIRED**

HIRL all Rwys  
TDZ/CL all Rwys except 4L and 32L