

LOC/DME I-SXH 108.95 Chan 26(Y)	APP CRS 093°	Rwy ldg 10540	TDZE 669
		Apt Elev 672	

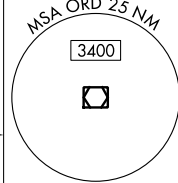
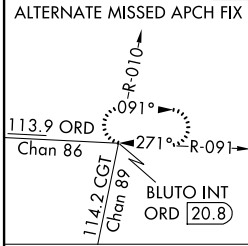
ILS RWY 10C (SA CAT I)

CHICAGO-O'HARE INTL (ORD)

Simultaneous approach authorized with Rwy 9L/R and Rwy 10L. DME or Radar required. Requires specific OPSPEC, MSPEC, or LOA approval and use of HUD to DH.

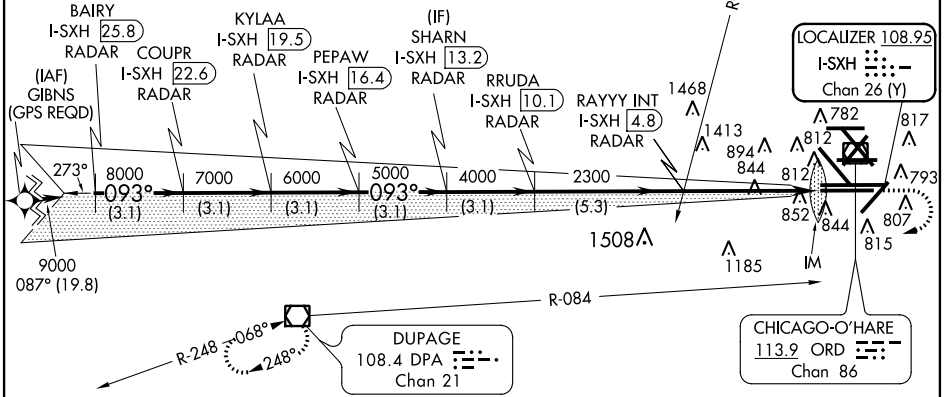
ALSF-2 (A) MISSED APPROACH: Climb to 1200 then climbing right turn to 4000 on DPA VOR/DME R-084 to DPA VOR/DME and hold.

ATIS 135.4	CHICAGO APP CON 119.0 393.1	O'HARE TOWERS 128.15 348.0 (Rwy 9L/27R) (NORTH)	GND CON (TWR CENTER) (OBND) 124.125 (TWR NORTH) 121.75 (OBND) 121.9 (IBND) 134.15 (Rwy 10C/28C)
282.225	119.0 393.1	120.75 121.15 126.9 132.7 348.0 (CENTER)	226.675 (ALL TWRS)



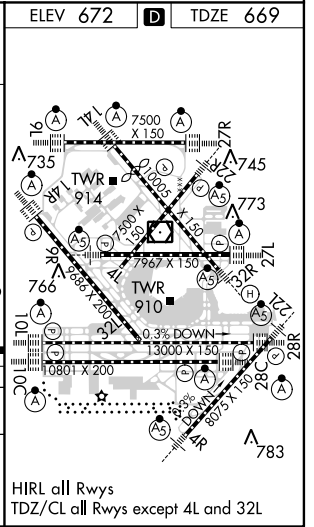
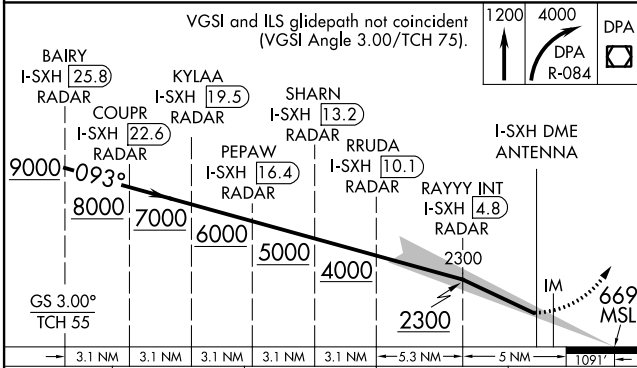
CLNC DEL **121.6**

GPS or RADAR REQUIRED



EC-3, 26 JUN 2014 to 24 JUL 2014

EC-3, 26 JUN 2014 to 24 JUL 2014



CATEGORY	A	B	C	D
S-ILS 10C	RA 150/14 150 DA 819			

SA CATEGORY I ILS - SPECIAL AIRCREW & AIRCRAFT CERTIFICATION REQUIRED

HIRL all Rwys
TDZ/CL all Rwys except 4L and 32L