

LOC/DME I-MED 111.1 Chan 48	APP CRS 093°	Rwy Idg 12246 TDZE 672 Apt Elev 672
---	------------------------	--

ILS RWY 10L (CAT II & III)

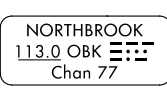
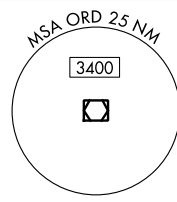
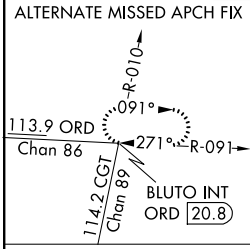
CHICAGO-O'HARE INTL (ORD)

Simultaneous approach authorized with Rwy 9R/L. DME or RADAR required.

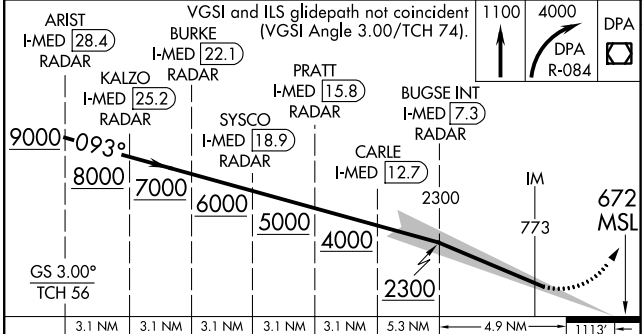
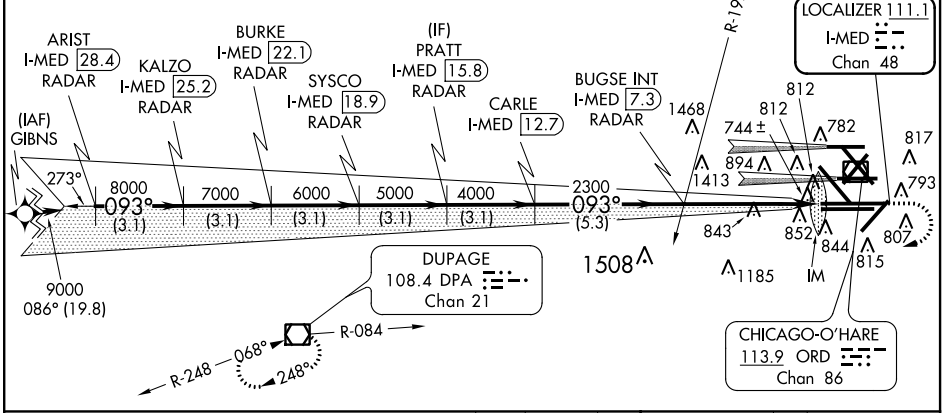


MISSED APPROACH: Climb to 1100 then climbing right turn to 4000 on DPA VOR/DME R-084 to DPA VOR/DME and hold.

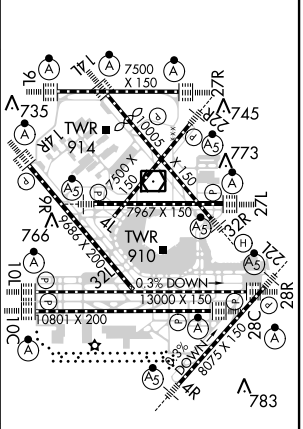
ATIS 135.4 282.225	CHICAGO APP CON 119.0 393.1	O'HARE TOWERS 128.15 348.0 (Rwy 9L/27R) (NORTH) 120.75 121.15 126.9 132.7 348.0 (CENTER)	GND CON (TWR CENTER) 124.125 (TWR NORTH) 121.75 (OBND) 121.9 (IBND) 134.15 (Rwy 10C/28C)
--	---------------------------------------	--	--



RADAR or GPS REQUIRED



ELEV 672	TDZE 672
----------	----------



3.1 NM	3.1 NM	3.1 NM	3.1 NM	3.1 NM	5.3 NM	4.9 NM	1113'
CATEGORY	A		B		C	D	
S-ILS 10L	CAT II RA 95/12 100 DA 772						
S-ILS 10L	CAT IIIa RVR 07						
S-ILS 10L	CAT IIIb RVR 06						
S-ILS 10L	CAT IIIc NA						

CATEGORY II and III ILS - SPECIAL AIRCREW & AIRCRAFT CERTIFICATION REQUIRED

HIRL all Rwys
TDZ/CL all Rwys except 4L and 32L

EC-3, 26 JUN 2014 to 24 JUL 2014

EC-3, 26 JUN 2014 to 24 JUL 2014