

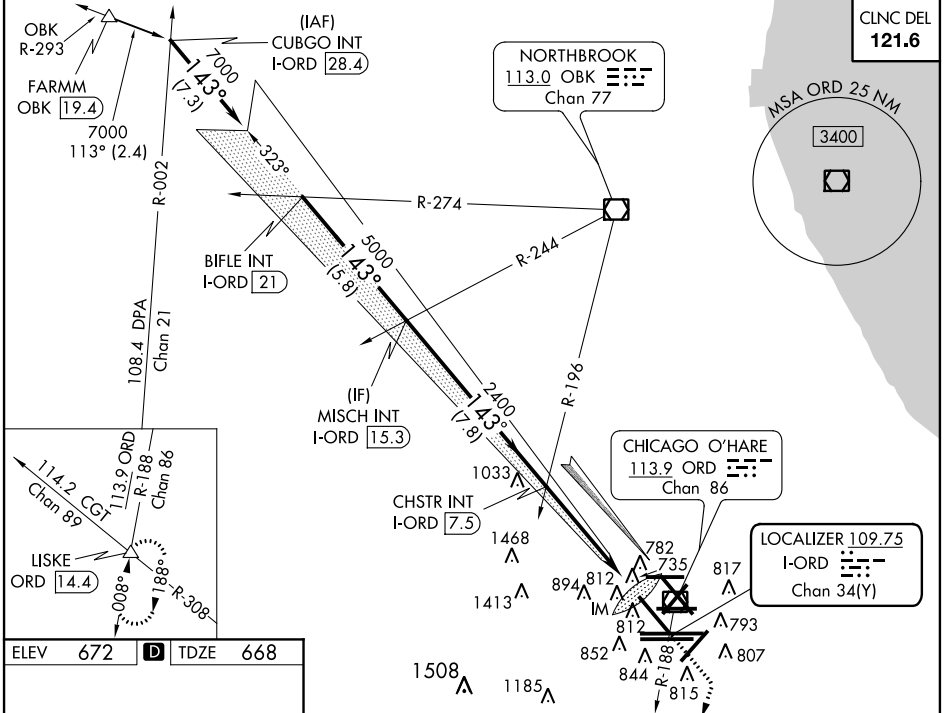
| | | |
|---|------------------------|--|
| LOC/DME I-ORD 109.75 Chan 34 (Y) | APP CRS 143° | Rwy Idg TDZE Apt Elev 8650 668 672 |
|---|------------------------|--|

ILS RWY 14R (CAT II & III)
CHICAGO-O'HARE INTL (ORD)

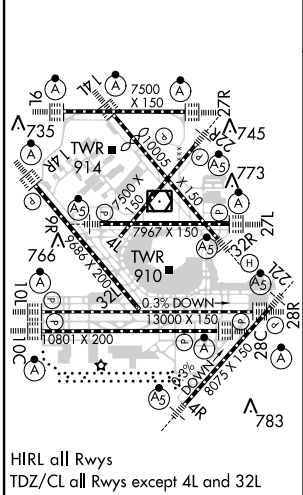
Simultaneous approach authorized with Rwy 14L.

MISSED APPROACH: Climb to 1700 then climbing right turn to 4000 via heading 220° and ORD VOR/DME R-188 to LISKE INT/ORD 14.4 DME and hold.

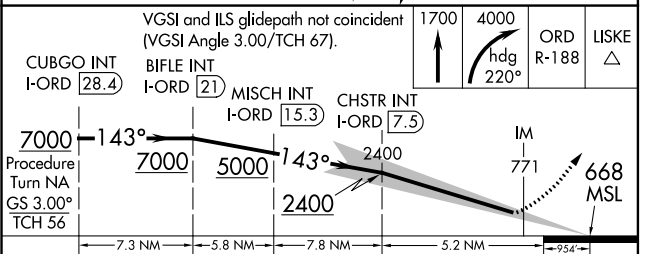
| | | | |
|--|---------------------------------------|---|---|
| ATIS 135.4 282.225 | CHICAGO APP CON 119.0 393.1 | O'HARE TOWERS (Rwy 9L/27R) (NORTH) 128.15 348.0 120.75 121.15 126.9 132.7 348.0 (CENTER) | GND CON (TWR CENTER) (TWR NORTH) (IBND) (Rwy 10C/28C) 121.75 121.9 134.15 |
|--|---------------------------------------|---|---|



| | | |
|----------|----------|----------|
| ELEV 672 | D | TDZE 668 |
|----------|----------|----------|



HIRL all Rwys
TDZ/CL all Rwys except 4L and 32L



| | | | | |
|-----------|-----------------------------|---|---|---|
| CATEGORY | A | B | C | D |
| S-ILS 14R | CAT II RA 110/12 100 DA 768 | | | |
| S-ILS 14R | CAT IIIa RVR 07 | | | |
| S-ILS 14R | CAT IIIb RVR 06 | | | |
| S-ILS 14R | CAT IIIc NA | | | |

CATEGORY II & III ILS - SPECIAL AIRCREW & AIRCRAFT CERTIFICATION REQUIRED

EC-3, 26 JUN 2014 to 24 JUL 2014

EC-3, 26 JUN 2014 to 24 JUL 2014