

LOC/DME I-IAC <b>110.5</b> Chan <b>42</b>	APP CRS <b>273°</b>	Rwy ldg <b>7782</b> TDZE <b>654</b> Apt Elev <b>672</b>
---	------------------------	---

# ILS RWY 27L (SA CAT I)

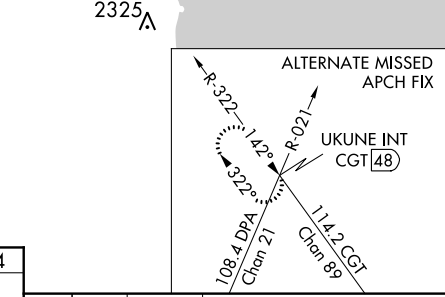
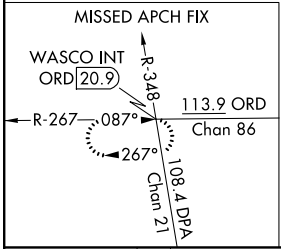
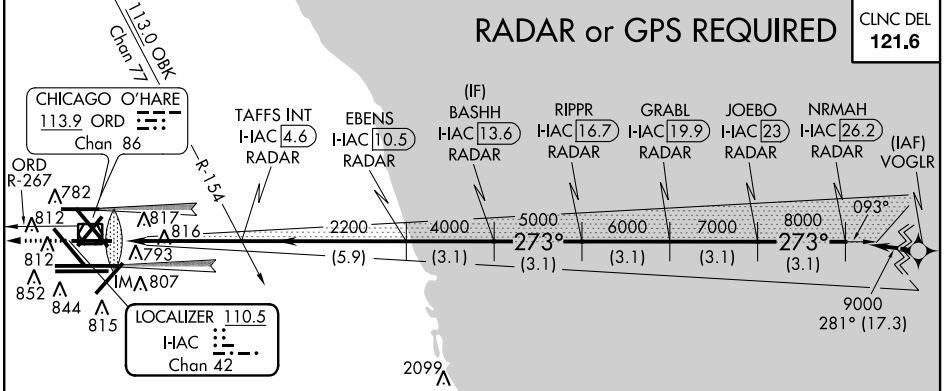
## CHICAGO-O'HARE INTL (ORD)

Simultaneous approach authorized with Rwy 27R and Rwy 28C/R. DME or RADAR required. Light poles and sign up to 739' MSL located between 580 feet and 980 feet south of Rwy. Requires specific OPSPEC, MSPEC, or LOA approval and use of HUD to DH.

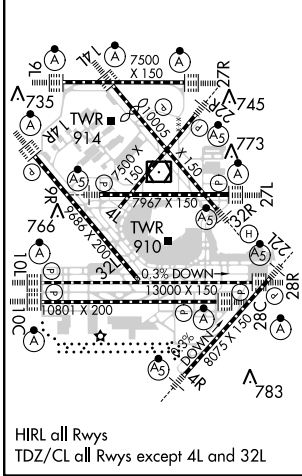
ALSF-2

MISSED APPROACH: Climb to 4000 on ORD VOR/DME R-267 to WASCO INT/20.9 DME and hold.

ATIS <b>135.4</b> <b>282.225</b>	CHICAGO APP CON <b>119.0 393.1</b>	O'HARE TOWERS <b>128.15 348.0</b> (Rwy 9L/27R) (NORTH) <b>120.75 121.15 126.9 132.7 348.0</b> (CENTER)	GND CON <b>124.125</b> (TWR NORTH) <b>226.675</b> (ALL TWRs)	(TWR CENTER) <b>121.75</b> (OBND) <b>121.9</b> (IBND) <b>134.15</b> (Rwy 10C/28C)
--	---------------------------------------	--	--	--



ELEV <b>672</b>	<b>D</b>	TDZE <b>654</b>
-----------------	----------	-----------------



4000	ORD R-267	WASCO INT	VGSi and ILS glidepath not coincident (VGSi Angle 3.00/TCH 67).					
650 MSL	HAC DME ANTENNA	TAFS INT I-IAC <b>4.6</b> RADAR	EBENS I-IAC <b>10.5</b> RADAR	BASHH I-IAC <b>13.6</b> RADAR	RIPPR I-IAC <b>16.7</b> RADAR	GRABL I-IAC <b>19.9</b> RADAR	JOEBO I-IAC <b>23</b> RADAR	NRMAH I-IAC <b>26.2</b> RADAR
2200	IM	2200	4000	5000	6000	7000	8000	9000
1040'	4.7 NM	5.9 NM	3.1 NM	3.1 NM	3.1 NM	3.1 NM	3.1 NM	
CATEGORY	A	B	C	D				
S-ILS 27L	RA 160/14		150 DA 804					

**SA CATEGORY I ILS-SPECIAL AIRCREW & AIRCRAFT CERTIFICATION REQUIRED**

EC-3, 26 JUN 2014 to 24 JUL 2014

EC-3, 26 JUN 2014 to 24 JUL 2014