

LOC/DME I-VZE 108.95 Chan 26 (Y)	APP CRS 273°	Rwy ldg 10801
		TDZE 651
		Apt Elev 672

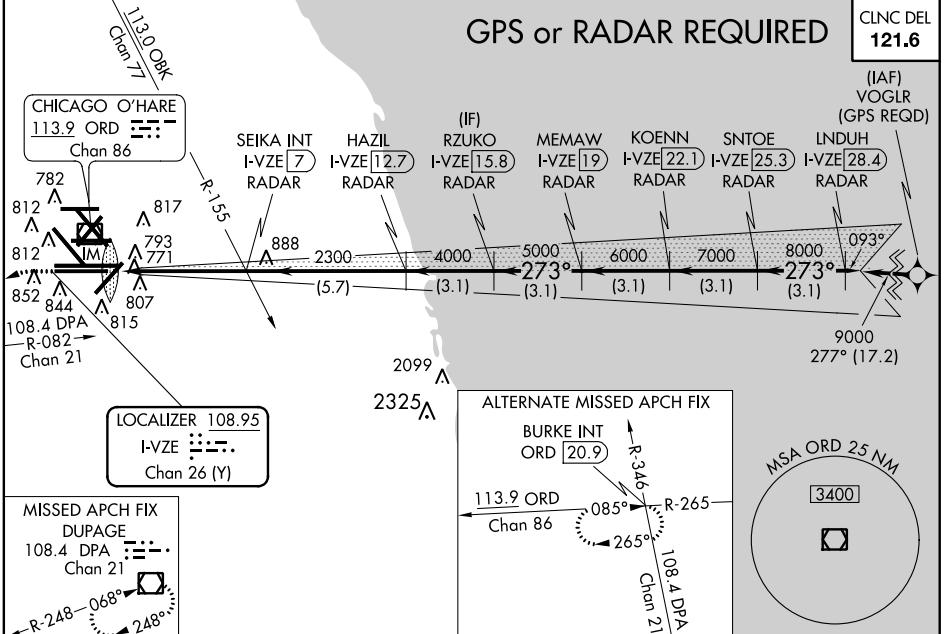
ILS RWY 28C (CAT II & III)

CHICAGO-O'HARE INTL (ORD)

Simultaneous approach authorized with Rwy 27L/R and Rwy 28R. DME or Radar required.

ALSIF-2
MISSED APPROACH: Climb to 1100 then climbing left turn to 4000 on heading 215° and DPA VOR/DME R-082 to DPA VOR/DME and hold.

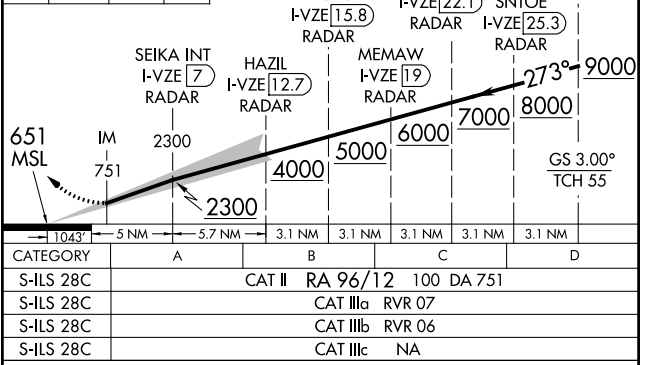
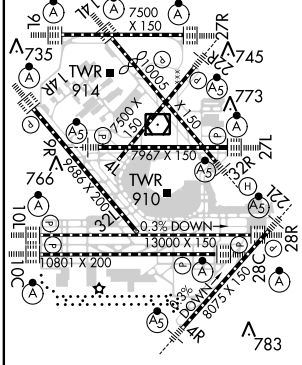
ATIS 135.4	CHICAGO APP CON 119.0 393.1	O'HARE TOWERS 128.15 348.0 (Rwy 9L/27R) (NORTH)	GND CON 124.125 (TWR NORTH)	(TWR CENTER) 121.75 (OBND)
282.225		120.75 121.15 126.9 132.7 348.0 (CENTER)	226.675 (ALL TWRs)	121.9 (IBND)
				134.15 (Rwy 10C/28C)



EC-3, 26 JUN 2014 to 24 JUL 2014

EC-3, 26 JUN 2014 to 24 JUL 2014

ELEV 672	D	TDZE 651	1100	4000	DPA R-082	DPA	VGSI and ILS glidepath not coincident (VGSI Angle 3.00/TCH 80).	LNDUH I-VZE [28.4] RADAR
			hdg 215°					



CATEGORY II & III ILS - SPECIAL AIRCREW & AIRCRAFT CERTIFICATION REQUIRED