

LOC/DME I-VZE 108.95 Chan 26 (Y)	APP CRS 273°	Rwy ldg TDZE Apt Elev	10801 651 672
---	------------------------	-----------------------------	--

ILS RWY 28C (SA CAT I)

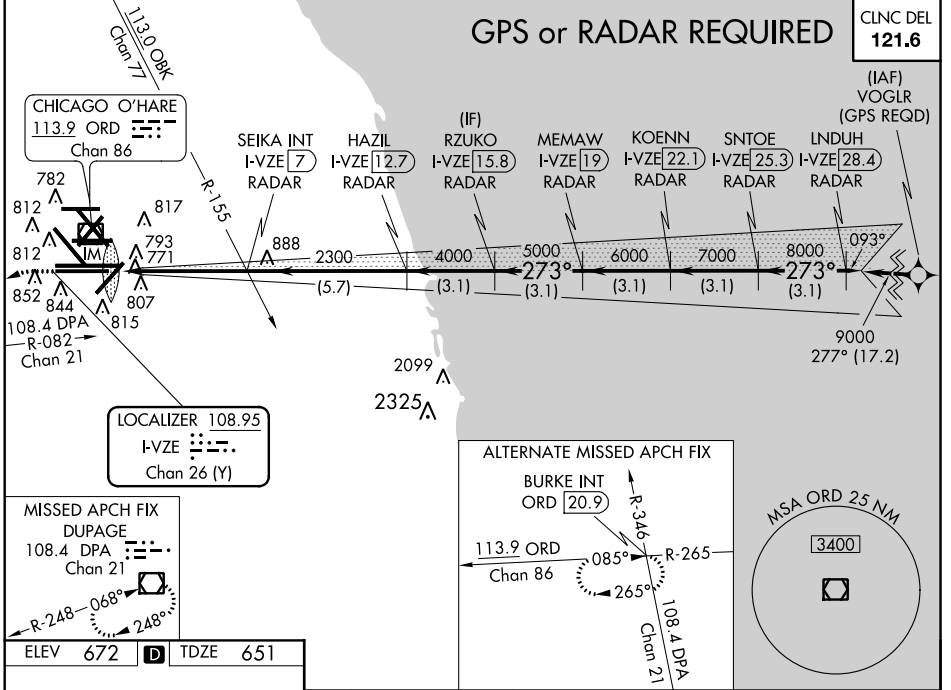
CHICAGO-O'HARE INTL (ORD)

Simultaneous approach authorized with Rwy 27L/R and Rwy 28R. DME or Radar required. Requires specific OPSPEC, MSPEC, or LOA approval and use of HUD to DH.

ALSF-2

MISSED APPROACH: Climb to 1100 then climbing left turn to 4000 on heading 215° and DPA VOR/DME R-082 to DPA VOR/DME and hold.

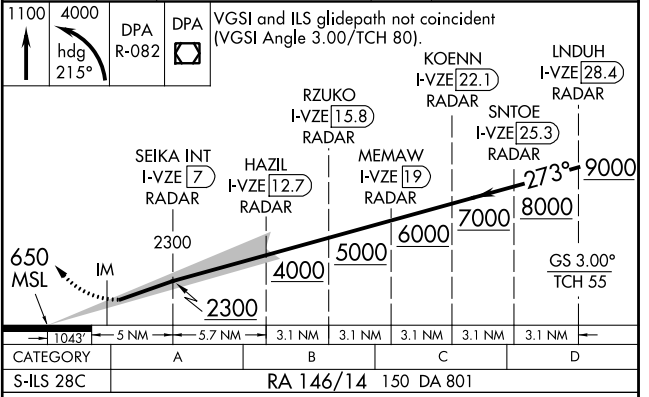
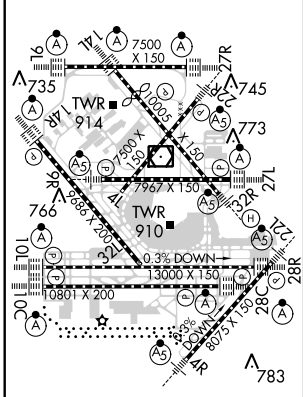
ATIS 135.4	CHICAGO APP CON 119.0 393.1	O'HARE TOWERS 128.15 348.0 (Rwy 9L/27R) (NORTH) 120.75 121.15 126.9 132.7 348.0 (CENTER)				GND CON 124.125 (TWR NORTH) 226.675 (ALL TWRs)	(TWR CENTER) 121.75 (OBND) 121.9 (IBND) 134.15 (Rwy 10C/28C)
----------------------	---------------------------------------	--	--	--	--	--	--



EC-3, 26 JUN 2014 to 24 JUL 2014

EC-3, 26 JUN 2014 to 24 JUL 2014

ELEV 672	D	TDZE 651
----------	----------	----------



SA CATEGORY I ILS - SPECIAL AIRCREW & AIRCRAFT CERTIFICATION REQUIRED