

LOC/DME I-TSL <b>111.1</b> Chan 48	APP CRS <b>273°</b>	Rwy ldg <b>13000</b> TDZE <b>651</b> Apt Elev <b>672</b>
--	------------------------	--

# ILS RWY 28R (CAT II & III)

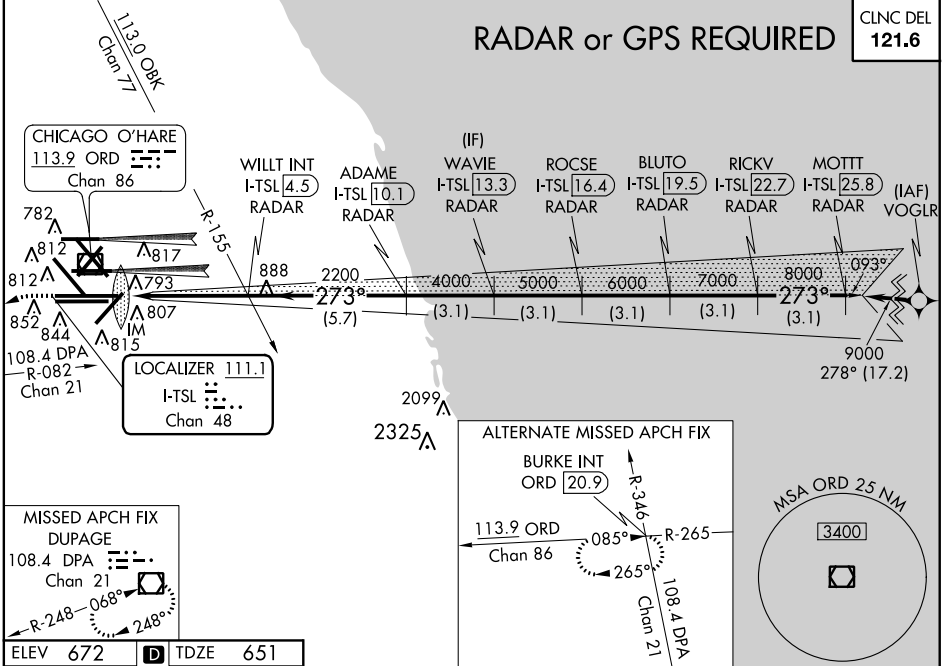
CHICAGO-O'HARE INTL (ORD)

Simultaneous approach authorized with Rwy 27L/R. DME or RADAR required.

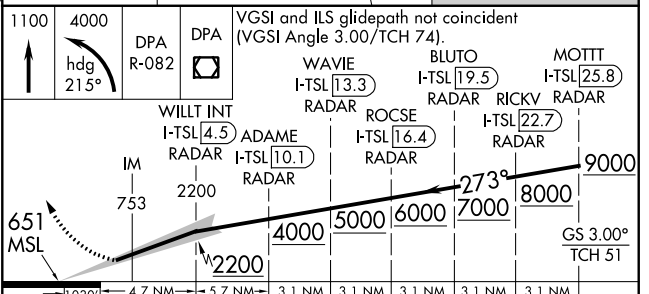
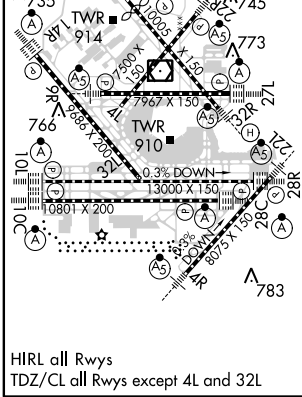
ALSIF-2

MISSED APPROACH: Climb to 1100 then climbing left turn to 4000 on heading 215° and DPA VOR/DME R-082 to DPA VOR/DME and hold.

ATIS <b>135.4</b> <b>282.225</b>	CHICAGO APP CON <b>119.0 393.1</b>	O'HARE TOWERS (Rwy 9L/27R) (NORTH) <b>128.15 348.0 120.75 121.15 126.9 132.7 348.0</b> (CENTER)	GND CON (TWR CENTER) <b>121.75</b> (OBND) (IBND) <b>121.9</b> (Rwy 10C/28C) <b>134.15</b>
--	---------------------------------------	---	--



ELEV 672	D	TDZE 651
----------	---	----------



CATEGORY	A	B	C	D
S-ILS 28R	CAT II RA 97/12 100 DA 751			
S-ILS 28R	CAT IIIa RVR 07			
S-ILS 28R	CAT IIIb RVR 06			
S-ILS 28R	CAT IIIc NA			

## CATEGORY II & III ILS - SPECIAL AIRCREW & AIRCRAFT CERTIFICATION REQUIRED

EC-3, 26 JUN 2014 to 24 JUL 2014

EC-3, 26 JUN 2014 to 24 JUL 2014