

LOC/DME I-TSL 111.1 Chan 48	APP CRS 273°	Rwy ldg 13000 TDZE 651 Apt Elev 672
--	------------------------	--

ILS RWY 28R (SA CAT I)

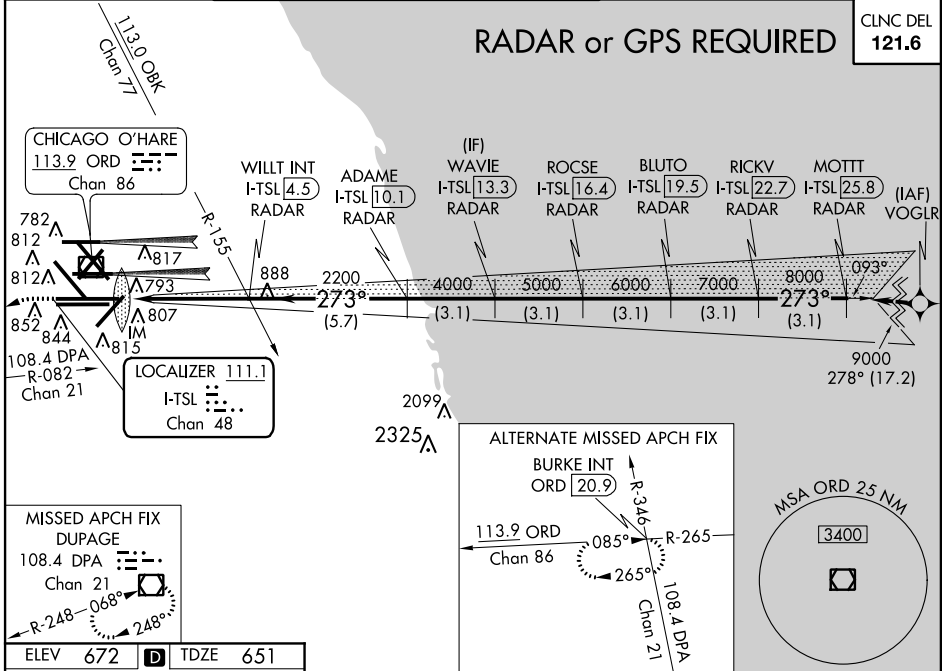
CHICAGO-O'HARE INTL (ORD)

Simultaneous approach authorized with Rwy 27L/R. DME or RADAR required. Requires specific OPSEC, MSPEC, or LOA approval and use of HUD to DH.

ALSF-2

MISSED APPROACH: Climb to 1100 then climbing left turn to 4000 via heading 215° and DPA VOR/DME R-082 to DPA VOR/DME and hold.

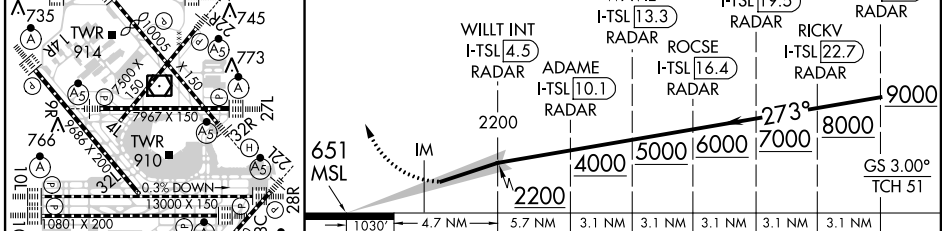
ATIS 135.4 282.225	CHICAGO APP CON 119.0 393.1	O'HARE TOWERS (Rwy 9L/27R) (NORTH) 128.15 348.0 120.75 121.15 126.9 132.7 348.0 (CENTER)	GND CON (TWR CENTER) 121.75 (OBND) 121.9 (IBND) 134.15 (Rwy 10C/28C)
--	---------------------------------------	---	---



EC-3, 26 JUN 2014 to 24 JUL 2014

EC-3, 26 JUN 2014 to 24 JUL 2014

1100	4000	DPA R-082	DPA	VGSI and ILS glidepath not coincident (VGSI Angle 3.00/TCH 74).
------	------	-----------	-----	---



CATEGORY	A	B	C	D
S-ILS 28R	RA 161/14 150 DA 801			

SA CATEGORY I ILS-SPECIAL AIRCREW & AIRCRAFT CERTIFICATION REQUIRED