

LOC/DME I-SXH 108.95 Chan 26(Y)	APP CRS 093°	Rwy Idg 10540 TDZE 669 Apt Elev 672
--	------------------------	--

ILS or LOC RWY 10C

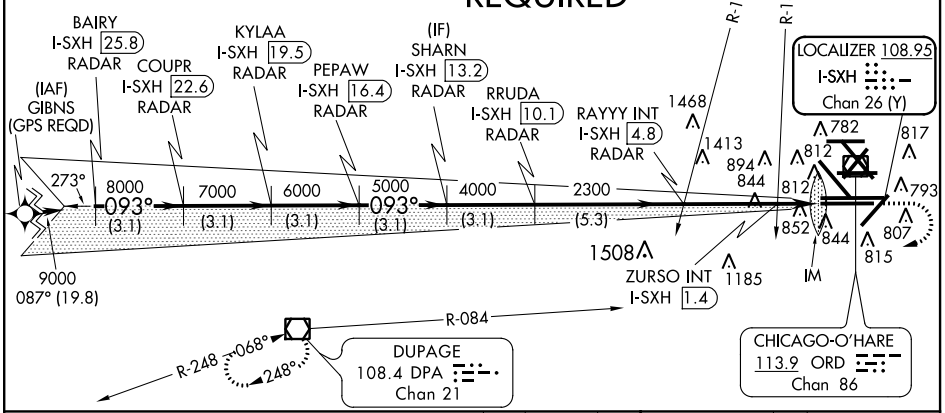
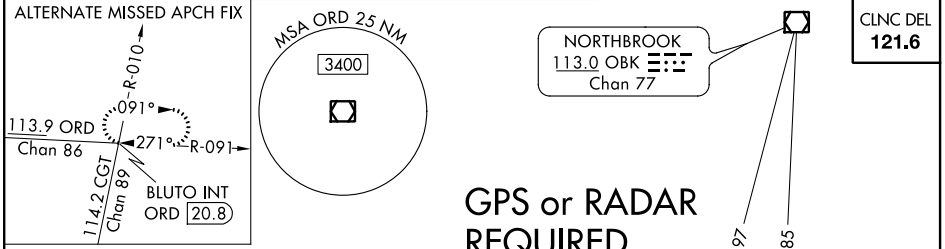
CHICAGO-O'HARE INTL (ORD)

⚠ Simultaneous approach authorized with Rwy 9L/R and Rwy 10L. DME or Radar required.

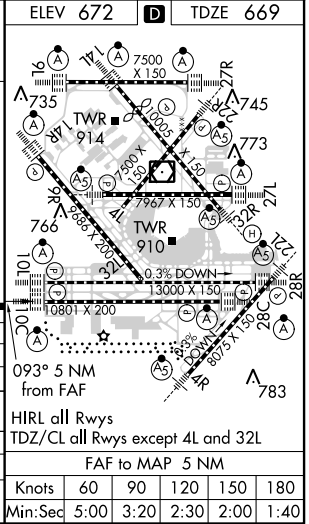
ALS-F-2

MISSED APPROACH: Climb to 1200 then climbing right turn to 4000 on DPA VOR/DME R-084 to DPA VOR/DME and hold.

ATIS 135.4	CHICAGO APP CON 282.225 119.0 393.1	O'HARE TOWERS 128.15 348.0 (Rwy 9L/27R) (NORTH) 120.75 121.15 126.9 132.7 348.0 (CENTER)	GND CON (TWR CENTER) 124.125 (TWR NORTH) 121.9 (IBND) 134.15 (Rwy 10C/28C)
----------------------	---	--	--



BAIRY I-SXH (25.8) RADAR	COUPR I-SXH (22.6) RADAR	PEPAW I-SXH (16.4) RADAR	RRUDA I-SXH (10.1) RADAR	ZURSO INT I-SXH (1.4)	I-SXH DME ANTENNA	I-SXH (0.2)
VGSI and ILS glidepath not coincident (VGSI Angle 3.00/TCH 75).						
9000	8000	7000	6000	5000	4000	2300
GS 3.00° TCH 55						
*LOC only						
*DPA R-084						
3.1 NM	3.1 NM	3.1 NM	3.1 NM	3.1 NM	5.3 NM	1.5 NM
CATEGORY		A	B	C	D	
S-ILS 10C		869/18		200 (200-½)		
S-LOC 10C		1220/24	551 (600-½)	1220/60	551 (600-1¼)	
CIRCLING		1220-1	548 (600-1)	1220-1½	1460-2½	788 (800-2½)
ZURSO FIX MINIMUMS (DUAL VOR RECEIVERS OR DME REQUIRED)						
S-LOC 10C		1100/24	431 (500-½)	1100/40	431 (500-¾)	
CIRCLING		1220-1	548 (600-1)	1220-1½	1460-2½	788 (800-2½)



EC-3, 26 JUN 2014 to 24 JUL 2014

EC-3, 26 JUN 2014 to 24 JUL 2014