

LOC I-LQQ <b>110.1</b>	APP CRS <b>225°</b>	Rwy ldg TDZE Apt Elev	<b>8075</b> <b>654</b> <b>672</b>
---------------------------	------------------------	-----------------------------	---

# ILS or LOC RWY 22L

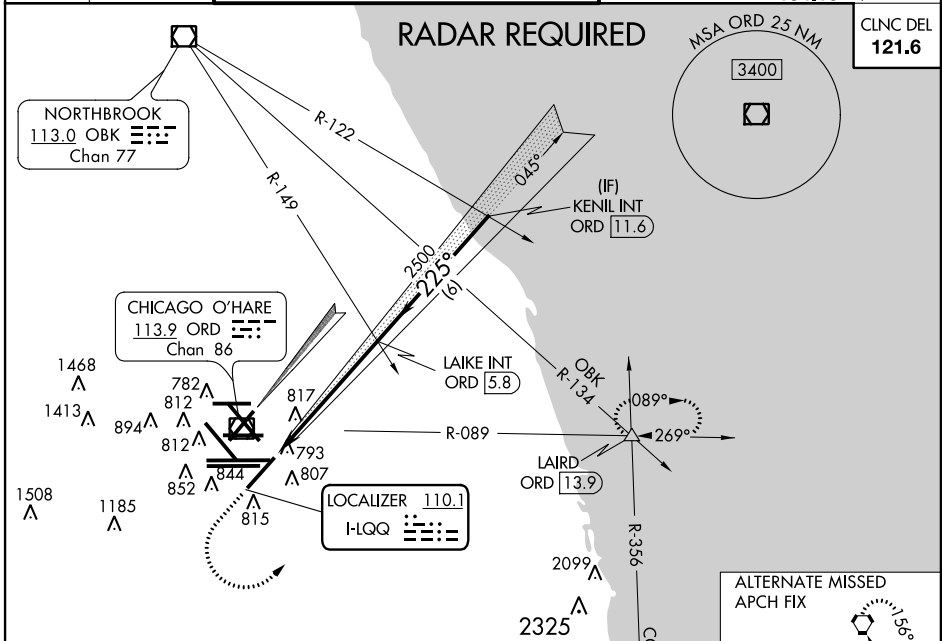
CHICAGO-O'HARE INTL (ORD)

Simultaneous approach authorized with Rwy 22R.

MALSRS

MISSED APPROACH: Climb to 1100 then climbing left turn to 4000 on ORD VOR/DME R-089 to LAIRD INT/ORD 13.9 DME and hold.

ATIS <b>135.4</b> <b>282.225</b>	CHICAGO APP CON <b>119.0 393.1</b>	O'HARE TOWERS (Rwy 9L/27R) (NORTH) <b>128.15 348.0</b> <b>120.75 121.15 126.9 132.7 348.0</b> (CENTER)	GND CON (TWR CENTER) (TWR NORTH) (TWR SOUTH) (Rwy 10C/28C) <b>124.125</b> <b>121.75</b> <b>121.9</b> <b>134.15</b>
--	---------------------------------------	---	--



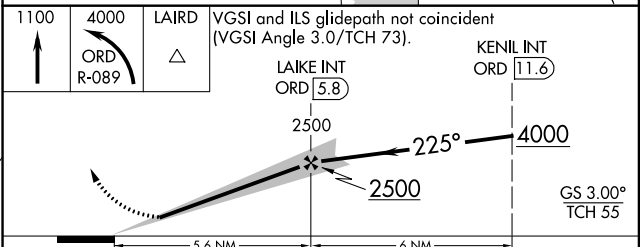
ELEV 672	<b>D</b>	TDZE 654
----------	----------	----------

225° 5.6 NM from FAF

HIRL all Rws  
TDZ/CL all Rws except 4L and 32L

FAF to MAP 5.6 NM

Knots	60	90	120	150	180
Min:Sec	5:36	3:44	2:48	2:14	1:52



CATEGORY	A	B	C	D
S-ILS 22L	854/18 200 (200-1/2)			
S-LOC 22L	1120/24	466 (500-1/2)	1120/50	466 (500-1)
CIRCLING	1220-1	548 (600-1)	1220-1 1/2	1240-2
			548 (600-1/2)	568 (600-2)

EC-3, 26 JUN 2014 to 24 JUL 2014

EC-3, 26 JUN 2014 to 24 JUL 2014