

LOC I-RXZ <b>111.3</b>	APP CRS <b>223°</b>	Rwy ldg TDZE <b>7500</b> <b>652</b>	Apt Elev <b>672</b>
---------------------------	------------------------	---	------------------------

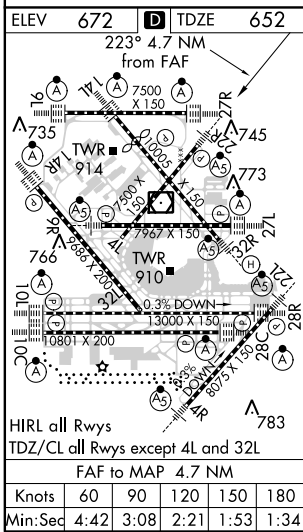
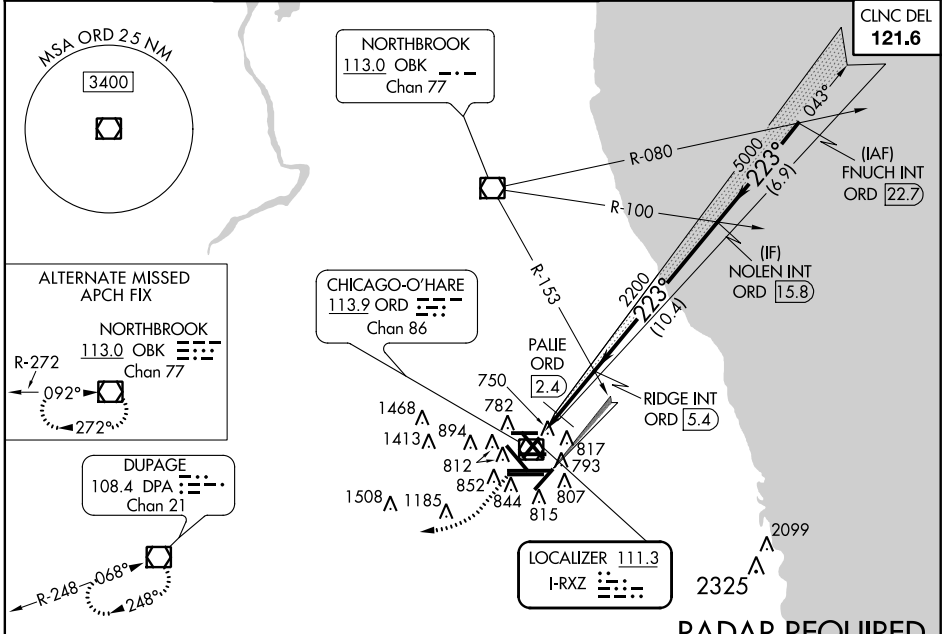
# ILS or LOC RWY 22R

CHICAGO-O'HARE INTL (ORD)

Simultaneous approach authorized with Rwy 22L.  
 \*DME from ORD VOR/DME.
 


 MISSED APPROACH: Climb to 1300 then climbing right turn to 4000 direct DPA VOR/DME and hold.

ATIS <b>135.4</b> <b>282.225</b>	CHICAGO APP CON <b>119.0 393.1</b>	O'HARE TOWERS <b>128.15 348.0</b> (Rwy 9L/27R) (NORTH) <b>120.75 121.15 126.9 132.7 348.0</b> (CENTER)	GND CON <b>124.125</b> (TWR NORTH) <b>121.9</b> (IBND) <b>134.15</b> (Rwy 10C/28C)	(TWR CENTER) <b>121.75</b> (OBND) <b>121.9</b> (IBND) <b>134.15</b> (Rwy 10C/28C)
--	---------------------------------------	---	---	--



1300	4000	DPA	VGSI and ILS glidepath not coincident (VGSI Angle 3.00/TCH 69).	
#LOC only	RIDGE INT ORD 5.4	NOLEN INT ORD 15.8	FNUCH INT ORD 22.7	
	PALIE ORD 2.4	2200	7000	
	#1220	5000	GS 3.00° TCH 49	
	1.7 NM	3 NM	6.9 NM	
CATEGORY	A	B	C	D
S-ILS 22R	852/18 200 (200-½)			
S-LOC 22R	1220/24	568 (600-½)	1220-1¼	568 (600-1¼)
CIRCLING	1220-1	548 (600-1)	1220-1½	1240-2
	*PALIE FIX MINIMUMS			
S-LOC 22R	980/24	328 (400-½)	980/26	328 (400-¾)
CIRCLING	1220-1	548 (600-1)	1220-1½	1240-2
	548 (600-1½) 568 (600-2)			

EC-3, 26 JUN 2014 to 24 JUL 2014

EC-3, 26 JUN 2014 to 24 JUL 2014