

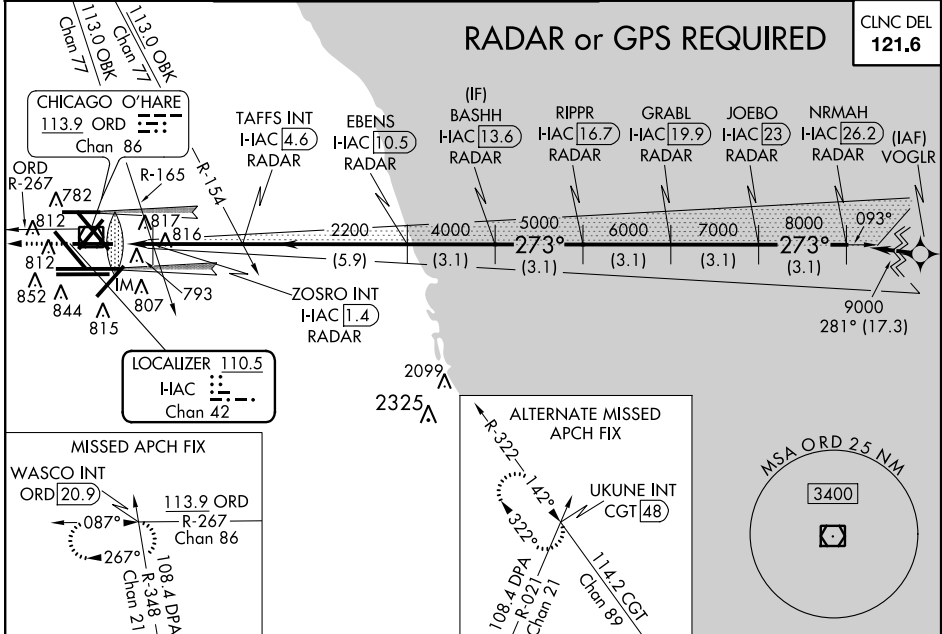
LOC/DME I-AIC 110.5 Chan 42	APP CRS 273°	Rwy ldg 7782 TDZE 654 Apt Elev 672
---	------------------------	---

ILS or LOC RWY 27L

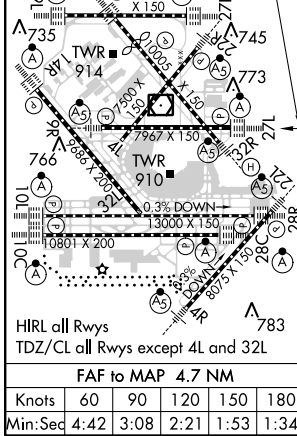
CHICAGO-O'HARE INTL (ORD)

Simultaneous approach authorized with Rwy 27R and Rwy 28C/R. DME or RADAR required. For inop ALSF, increase S-LOC 27L Cat C/D visibility to 1 3/8. Light poles and sign up to 739' MSL located between 580 feet and 980 feet south of Rwy.

ATIS 135.4 282.225	CHICAGO APP CON 119.0 393.1	O'HARE TOWERS 128.15 348.0 (Rwy 9L/27R) (NORTH) 120.75 121.15 126.9 132.7 348.0 (CENTER)	GND CON (TWR CENTER) 124.125 (TWR NORTH) 121.9 (IBND) 134.15 (Rwy 10C/28C)
--	---------------------------------------	--	--



ELEV 672	TDZE 654	3000	ORD R-267	WASCO INT	VGSI and ILS glidepath not coincident (VGSI Angle 3.00/TCH 67).
----------	----------	------	-----------	-----------	---



	I-AIC DME ANTENNA	TAFFS INT I-AIC 4.6 RADAR	EBENS I-AIC 10.5 RADAR	BASHH I-AIC 13.6 RADAR	RIPPR I-AIC 16.7 RADAR	GRABL I-AIC 19.9 RADAR	JOEBO I-AIC 23 RADAR	NRMAH I-AIC 26.2 RADAR
	I-AIC 0.1	ZOSRO INT I-AIC 1.4						
3000								
4000								
5000								
6000								
7000								
8000								
9000								
								GS 3.00° TCH 52
CATEGORY	A	B	C	D				
S-ILS 27L	854/18 200 (200-1/2)							
S-LOC 27L	1160/24	506 (500-1/2)	1160/55	506 (500-1 1/4)				
CIRCLING	1220-1	548 (600-1)	1220-1 1/2	1460-2 1/2	548 (600-1 1/2)	788 (800-2 1/2)		
ZOSRO INT FIX MINIMUMS (DUAL VOR RECEIVERS REQUIRED)								
S-LOC 27L	1080/24	426 (500-1/2)	1080/40	426 (500-3/4)				
CIRCLING	1220-1	548 (600-1)	1220-1 1/2	568 (600-1 1/2)	1240-2			

EC-3, 26 JUN 2014 to 24 JUL 2014

EC-3, 26 JUN 2014 to 24 JUL 2014