

LOC/DME I-VZE 108.95 Chan 26 (Y)	APP CRS 273°	Rwy ldg 10801
		TDZE 651
		Apt Elev 672

ILS or LOC RWY 28C

CHICAGO-O'HARE INTL (ORD)

Simultaneous approach authorized with Rwy 27L/R and Rwy 28R. DME or Radar required.

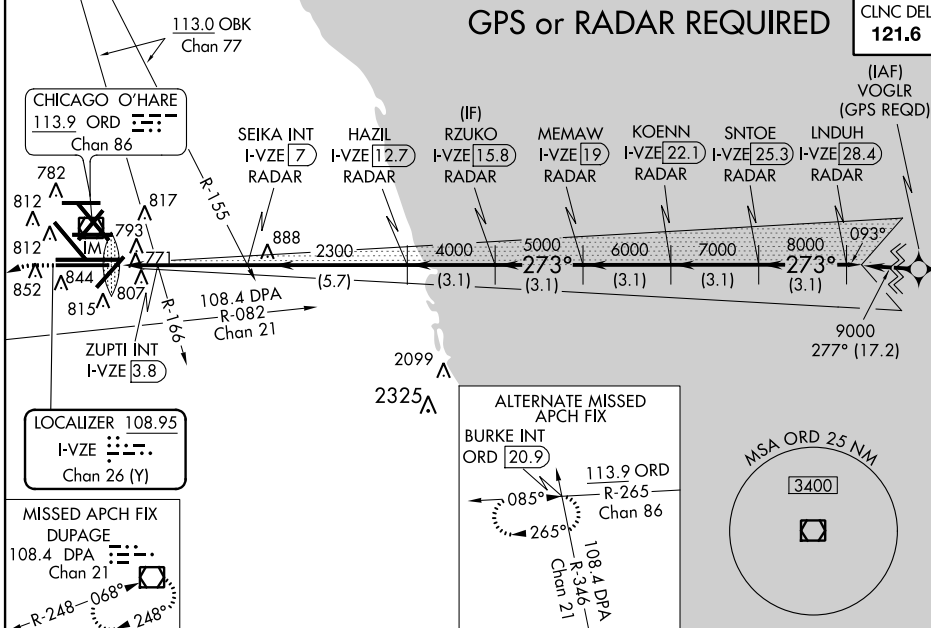


MISSED APPROACH: Climb to 1100 then climbing left turn to 4000 on heading 215° and on DPA VOR/DME R-082 to DPA VOR/DME and hold.

ATIS 135.4	CHICAGO APP CON 119.0 393.1	O'HARE TOWERS (Rwy 9L/27R) (NORTH)				GND CON (TWR CENTER)
282.225		128.15 348.0	120.75 121.15 126.9 132.7 348.0	(CENTER)	124.125 (TWR NORTH)	121.75 (OBND)
					121.9 (IBND)	134.15 (Rwy 10C/28C)

GPS or RADAR REQUIRED

CLNC DEL
121.6



ELEV 672	TDZE 651
HIRL all Rwys TDZ/CL all Rwys except 4L and 32L	
273° 5 NM from FAF	
FAF to MAP 5 NM	
Knots	60 90 120 150 180
Min:Sec	5:00 3:20 2:30 2:00 1:40

1100	4000	DPA R-082	DPA	RZUKO I-VZE [15.8] RADAR	KOENN I-VZE [22.1] RADAR	INDUH I-VZE [28.4] RADAR
*LOC only		SEIKA INT I-VZE [7] RADAR	HAZIL I-VZE [12.7] RADAR	MEMAW I-VZE [19] RADAR	SNTOE I-VZE [25.3] RADAR	
I-VZE [2]	ZUPTI INT I-VZE [3.8]	2300	4000	5000	6000	7000 8000
VGSI and ILS glidepath not coincident (VGSI Angle 3.00°/TCH 80).						
GS 3.00° TCH 55						
ZUPTI FIX MINIMUMS (DUAL VOR RECEIVERS OR DME REQUIRED)						
CATEGORY	A	B	C	D		
S-ILS 28C	851/18 200 (200-1/2)					
S-LOC 28C	1200/24	549 (600-1/2)	1200-60	549 (600-1 1/4)		
CIRCLING	1220-1	548 (600-1)	1220-1 1/2	548 (600-1 1/8)	1460-2 1/2	788 (800-2 1/2)
S-LOC 28C 1040/24 389 (400-1/2) 1040/35 389 (400-3/4)						
CIRCLING	1220-1	548 (600-1)	1220-1 1/2	548 (600-1 1/2)	1460-2 1/2	788 (800-2 1/2)