

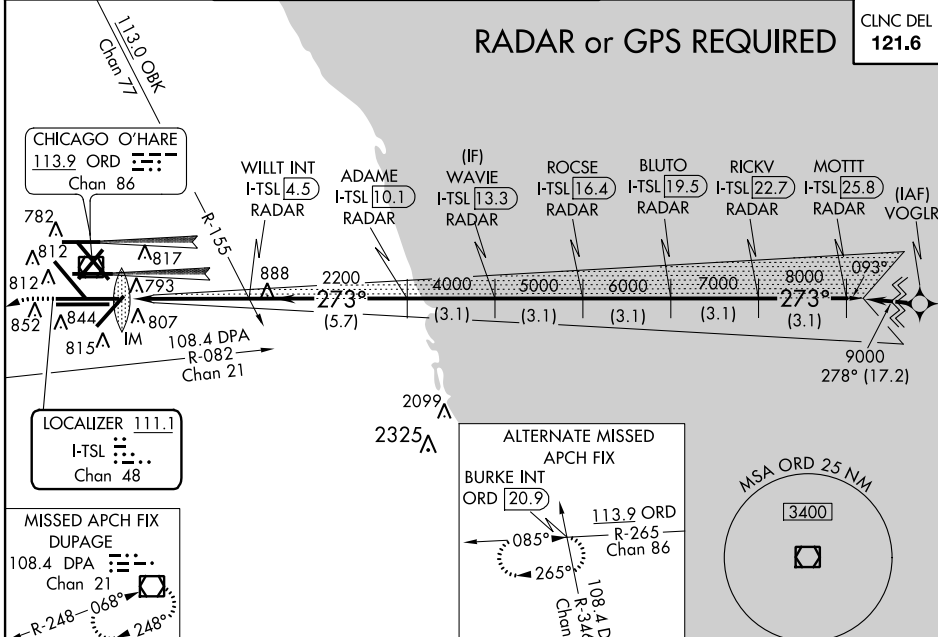
LOC/DME I-TSL 111.1 Chan 48	APP CRS 273°	Rwy ldg 13000 TDZE 651 Apt Elev 672
---	------------------------	--

ILS or LOC RWY 28R

CHICAGO-O'HARE INTL (ORD)

Simultaneous approach authorized with Rwy 27L/R. DME or RADAR required. For inoperative ALSF, increase S-LOC 28R Cats C/D visibilities to 1½. MISSED APPROACH: Climb to 1100 then climbing left turn to 4000 on heading 215° and DPA VOR/DME R-082 to DPA VOR/DME and hold.

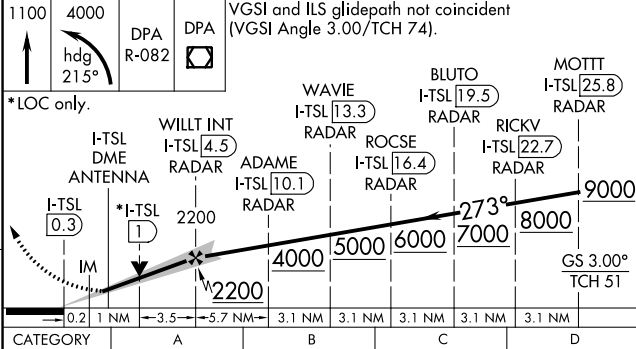
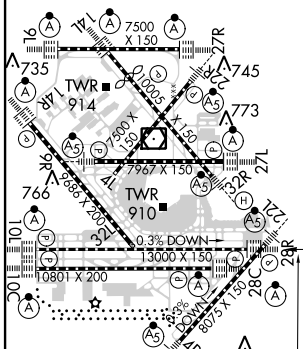
ATIS 135.4 282.225	CHICAGO APP CON 119.0 393.1	O'HARE TOWERS (Rwy 9L/27R) (NORTH) 128.15 348.0 120.75 121.15 126.9 132.7 348.0 (CENTER)	GND CON (TWR CENTER) 121.75 (OBND) (TWR NORTH) 121.9 (IBND) (ALL TWRS) 134.15 (Rwy 10C/28C)
--	---------------------------------------	---	---



EC-3, 26 JUN 2014 to 24 JUL 2014

EC-3, 26 JUN 2014 to 24 JUL 2014

ELEV 672	D	TDZE 651
----------	----------	----------



CATEGORY	A	B	C	D
S-ILS 28R	851/18 200 (200-½)			
S-LOC 28R	1120/24 469 (500-½)	1120/50 469 (500-1)		
CIRCLING	1220-1 548 (600-1)	1220-1½ 548 (600-½)	1240-2 568 (600-2)	