


LOC I-FJU	APP CRS	Rwy ldg	8075
110.1	045°	TDZE	661
		Apt Elev	672

ILS or LOC RWY 4R

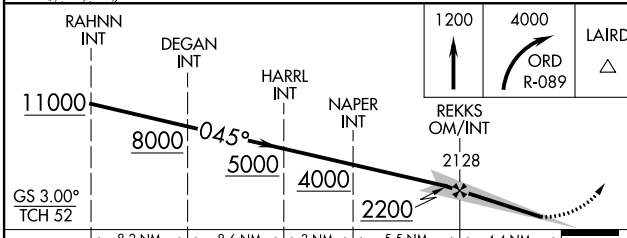
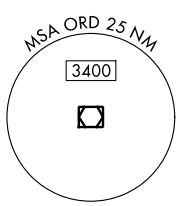
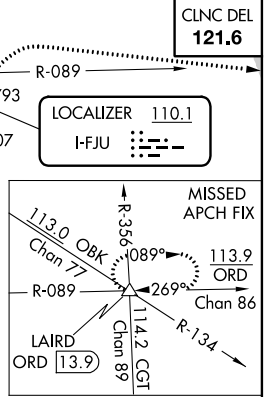
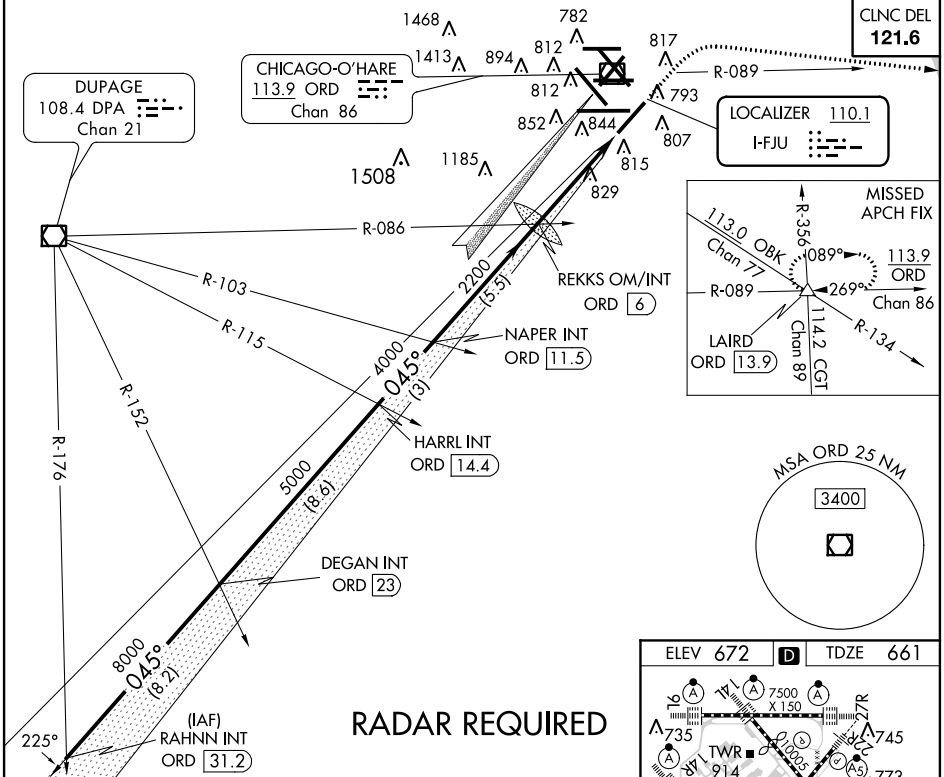
CHICAGO-O'HARE INTL (ORD)

Simultaneous approach authorized with Rwy 4L.

MALSR 

MISSED APPROACH: Climb to 1200, then climbing right turn to 4000 via ORD R-089 to LAIRD INT and hold.

ATIS	CHICAGO APP CON	O'HARE TOWERS				GND CON	(TWR CENTER)
135.4		128.15	348.0	(Rwy 9L/27R) (NORTH)		124.125	121.75
282.225	119.0 393.1	120.75	121.15	126.9	132.7 348.0	(CENTER)	121.9
							(TWR NORTH)
							134.15
							(Rwy 10C/28C)
							(ALL TVRS)



ELEV 672 TDZE 661

HIRL all Rwys
TDZ/CL all Rwys except 4L and 32L
FAF to MAP 4.4 NM

Knots	60	90	120	150	180
Min:Sec	4:24	2:56	2:12	1:46	1:28

CATEGORY	A	B	C	D
S-ILS 4R		861/18	200 (200-½)	
S-LOC 4R	1260/24 599 (600-½)	1260/50 599 (600-1)	1260/60 599 (600-1¼)	
CIRCLING	1260-1 588 (600-1)	1260-1½ 588 (600-1½)	1260-2 588 (600-2)	

EC-3, 26 JUN 2014 to 24 JUL 2014

EC-3, 26 JUN 2014 to 24 JUL 2014