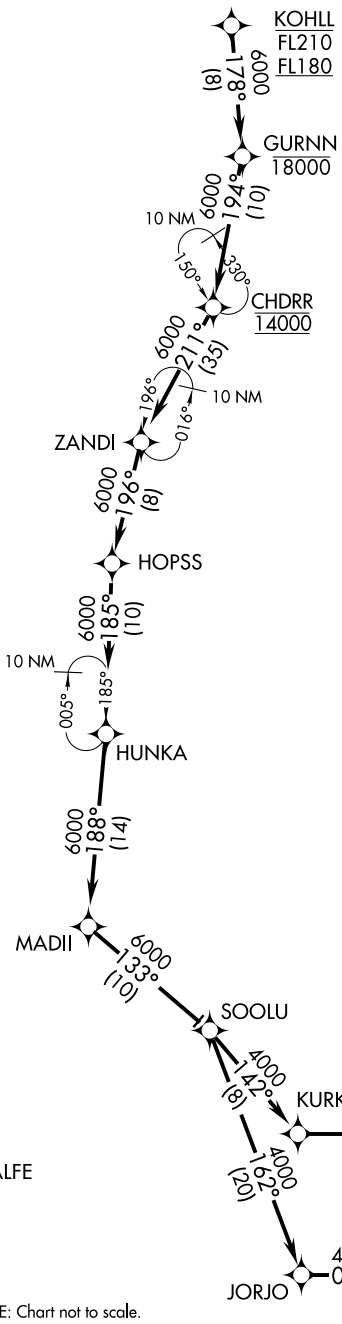


MADII ONE ARRIVAL (RNAV) Arrival Routes

ATIS
135.4 282.225
CHICAGO APP CON
119.0 393.1



NOTE: RADAR Required.
NOTE: RNAV 1.
NOTE: DME/DME/IRU or GPS required.

ARRIVAL ROUTE DESCRIPTION

From KOHLL on track 178° to cross GURNN at or below 18000, then on track 194° to cross CHDRR at 14000, then on track 211° to ZANDI, then on track 196° to HOPSS WP, then on track 185° to HUNKA WP, then on track 188° to MADII WP, then on track 133° to SOOLU WP.

LANDING RWYS 4L/R, 9L/R, 10L/C, 14L/R, 22L/R, 27L/R 32R: From SOOLU on track 142° to KURKK, then on track 093° to VULCN, then on track 093° to HIMGO, then on track 093° to TONIE. Expect radar vectors to final approach course.

LANDING RWYS 28C/R: From SOOLU on track 162° to JORJO, then on track 093° to MONKZ, then on track 093° to TONIE. Expect radar vectors to final approach course.

NOTE: Chart not to scale.

EC-3, 26 JUN 2014 to 24 JUL 2014

EC-3, 26 JUN 2014 to 24 JUL 2014