

WAAS CH 81934 W10B	APP CRS 093°	Rwy Idg 10540 TDZE 669 Apt Elev 672
--	------------------------	--

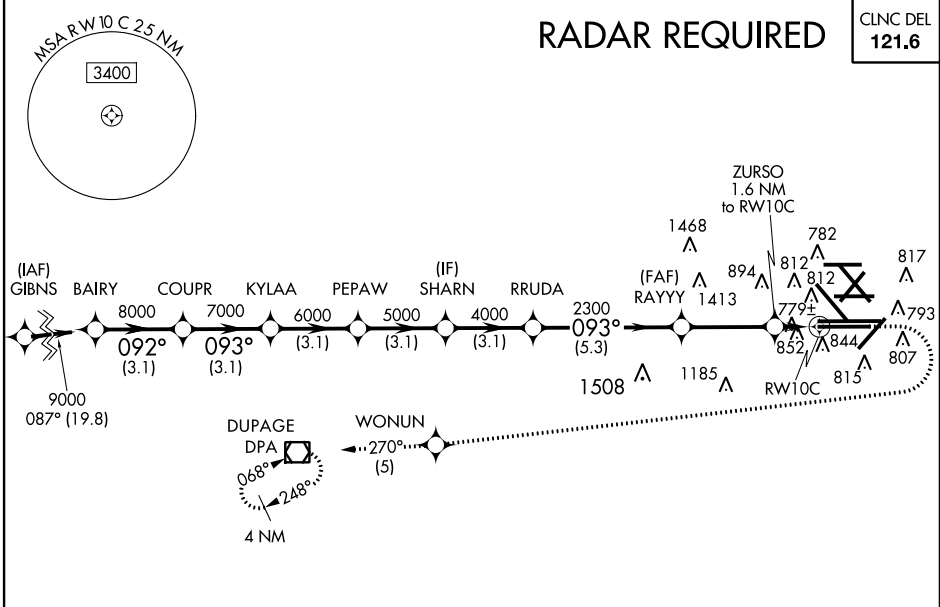
RNAV (GPS) RWY 10C

CHICAGO-O'HARE INTL (ORD)

▼ For uncompensated Baro-VNAV systems, LNAV/VNAV NA below -20°C (-4°F) or above 54°C (130°F). Simultaneous approach authorized with Rwy 9L/R and Rwy 10L. DME/DME RNP-0.3 NA. For inop ALSF, increase LNAV Cat A/B visibility to RVR 5500. LNAV procedure NA during simultaneous operations. Use of FD or AP providing RNAV track guidance required during simultaneous operations.

ALSF-2 MISSED APPROACH: Climb to 1200 then climbing right turn to 4000 direct WONUN and on track 270° to DPA VOR/DME and hold.

ATIS 135.4 282.225	CHICAGO APP CON 119.0 393.1	O'HARE TOWERS (Rwy 9L/27R) (NORTH) 128.15 348.0 120.75 121.15 126.9 132.7 348.0 (CENTER)	GND CON (TWR NORTH) 124.125 (ALL TWRs) 226.675	(TWR CENTER) (OBND) 121.75 (IBND) 121.9 (Rwy 10C/28C) 134.15
--	---------------------------------------	---	--	--



EC-3, 26 JUN 2014 to 24 JUL 2014

EC-3, 26 JUN 2014 to 24 JUL 2014

VGSi and RNAV glidepath not coincident (VGSi Angle 3.00/TCH 75).		1200	4000	WONUN	DPA	ELEV 672	TDZE 669
BAIRY COUPR KYLAA PEPAW SHARN RRUDA RAYYY ZURSO 1.6 NM to RWY 10C							
9000 8000 7000 6000 5000 4000 2300 *1220		* LNAV only					
GS 3.00° TCH 55		3.1 NM		5.3 NM		3.4 NM	
CATEGORY	A	B	C	D			
LPV DA	869/24		200 (200-½)				
LNAV/VNAV DA	1057/35		388 (400-¾)				
LNAV MDA	1120/24	451 (500-½)	1120/45	451 (500-¾)			
CIRCLING	1220-1	548 (600-1)	1220-1½	1460-2½	HIRL all Rwy's TDZ/CL all Rwy's except 4L and 32L		