

WAAS CH <b>48904</b> <b>W10A</b>	APP CRS <b>093°</b>	Rwy Idg <b>12246</b> TDZE <b>672</b> Apt Elev <b>672</b>
--	------------------------	--

# RNAV (GPS) RWY 10L

CHICAGO-O'HARE INTL (ORD)

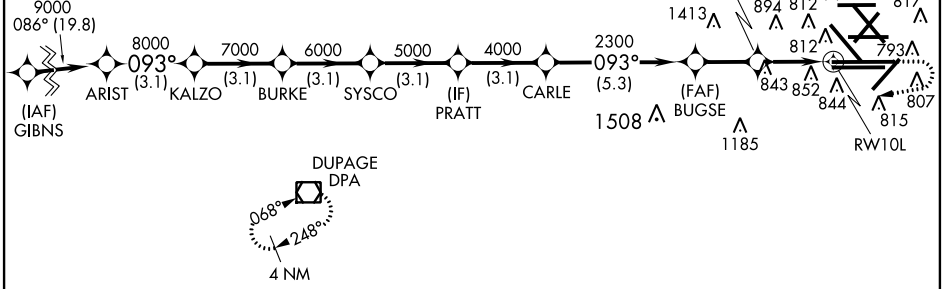
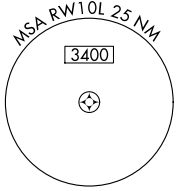
**▼** For uncompensated Baro-VNAV systems, LNAV/VNAV NA below -21°C (-5°F) or above 54°C (130°F). DME/DME RNP-0.3 NA. For inop ALSF, increase LNAV Cat C/D visibility to 1 3/8 mile. Simultaneous approach authorized with Rwy 9L/R. LNAV procedure NA during simultaneous operations. Use of FD or AP providing RNAV track guidance required during simultaneous operations.



**MISSED APPROACH:** Climb to 1200 then climbing right turn to 4000 direct DPA VOR/DME and hold.

ATIS <b>135.4</b>	CHICAGO APP CON <b>282.225 119.0 393.1</b>	O'HARE TOWERS <b>128.15 348.0</b> (Rwy 9L/27R) (NORTH) <b>120.75 121.15 126.9 132.7 348.0</b> (CENTER)	GND CON (TWR CENTER) <b>121.75</b> (OBND) <b>121.9</b> (IBND) <b>134.15</b> (Rwy 10C/28C)
----------------------	---	--	--

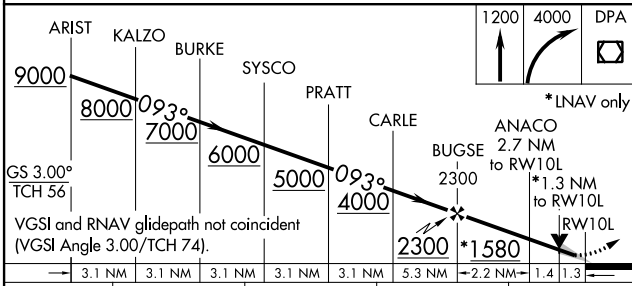
CLNC DEL  
**121.6**



EC-3, 26 JUN 2014 to 24 JUL 2014

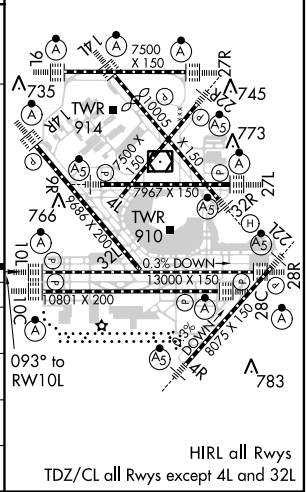
EC-3, 26 JUN 2014 to 24 JUL 2014

## RADAR REQUIRED



ELEV 672	<b>D</b> TDZE 672
----------	-------------------

GS 3.00° TCH 56	3.1 NM	3.1 NM	3.1 NM	3.1 NM	5.3 NM	2.2 NM	1.4	1.3
VGS1 and RNAV glidepath not coincident (VGS1 Angle 3.00/TCH 74).								
CATEGORY	A		B		C		D	
LPV DA	922/24		250 (300-1/2)					
LNAV/VNAV DA	1119/50		447 (500-1)					
LNAV MDA	1160/24 488 (500-1/2)		1160/50 488 (500-1)					
CIRCLING	1220-1 548 (600-1)		1220-1 1/2 548 (600-1/2)		1240-2 568 (600-2)			



HIRL all Rwys  
TDZ/CL all Rwys except 4L and 32L