

| | | | |
|--|------------------------|---|-------------|
| WAAS CH 70601 W14A | APP CRS 143° | Rwy ldg TDZE 653 Apt Elev 672 | 8007 |
|--|------------------------|---|-------------|

RNAV (GPS) RWY 14L

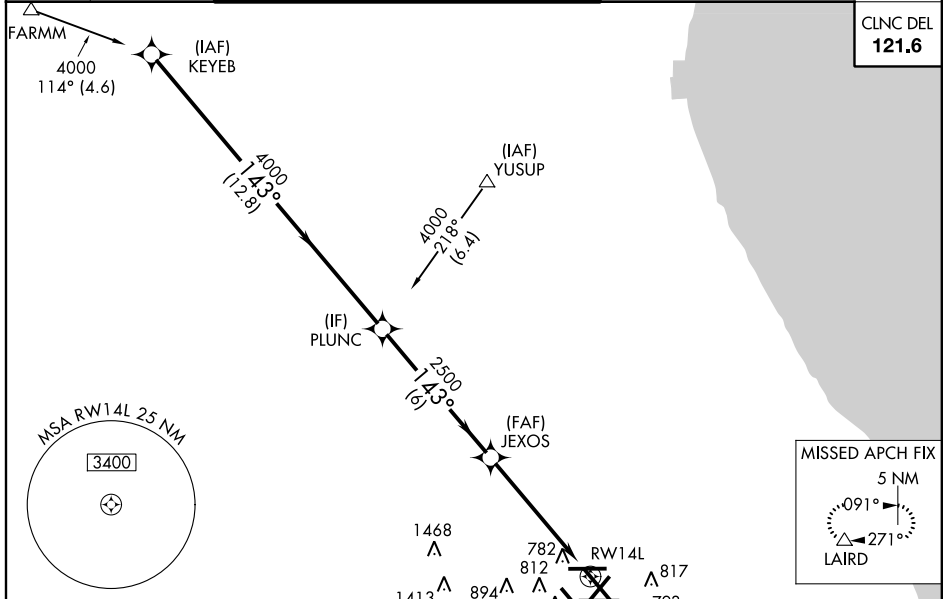
CHICAGO-O'HARE INTL (ORD)

▼ For uncompensated Baro-VNAV systems, LNAV/VNAV NA below -22°C (-7°F) or above 35°C (95°F). Simultaneous approach authorized with Rwy 14R. DME/DME RNP-0.3 NA. For inoperative ALSF, increase LPV all Cats visibility to RVR 6000 and LNAV/VNAV all Cats visibility to 1 3/4 mile. LNAV procedure NA during simultaneous operations. Use of FD or AP providing RNAV track guidance required during simultaneous operations.

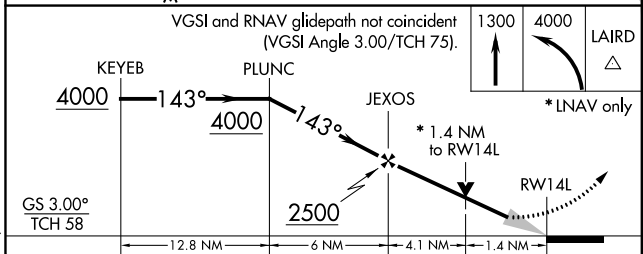
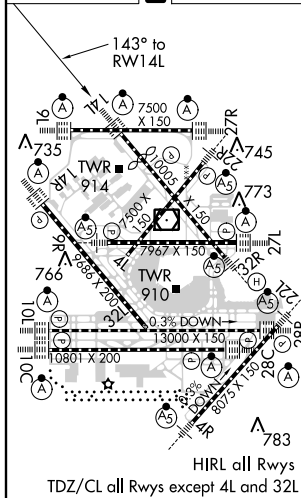
ALSF-2

MISSED APPROACH:
Climb to 1300 then climbing left turn to 4000 direct LAIRD and hold.

| | | | | |
|----------------------|---------------------------------------|---|---------------------------------------|--------------------------------------|
| ATIS 135.4 | CHICAGO APP CON 119.0 393.1 | O'HARE TOWERS 128.15 348.0 (Rwy 9L/27R) (NORTH) | GND CON 124.125 (TWR NORTH) | (TWR CENTER) 121.75 (OBND) |
| 282.225 | | 120.75 121.15 126.9 132.7 348.0 (CENTER) | 226.675 (ALL TWRs) | 121.9 (IBND) |
| | | | | 134.15 (Rwy 10C/28C) |



| | | |
|-----------------|----------|-----------------|
| ELEV 672 | D | TDZE 653 |
|-----------------|----------|-----------------|



| | | | | |
|--------------|---------|-----------------|---------------|---------------|
| CATEGORY | A | B | C | D |
| LPV DA | | 1029/40 | 376 (400-3/4) | |
| LNAV/VNAV DA | | 1164/60 | 511 (500-1/4) | |
| LNAV MDA | 1180/24 | 527 (600-1/2) | 1180/55 | 527 (600-1/4) |
| CIRCLING | 1220-1 | 548 (600-1) | 1220-1 1/2 | 1240-2 |
| | | 548 (600-1 1/2) | 568 (600-2) | |

EC-3, 26 JUN 2014 to 24 JUL 2014

EC-3, 26 JUN 2014 to 24 JUL 2014