

WAAS CH 50228 W22B	APP CRS 225°	Rwy Idg 8075 TDZE 654 Apt Elev 672
--	------------------------	---

RNAV (GPS) RWY 22L

CHICAGO-O'HARE INTL (ORD)

▼ For uncompensated Baro-VNAV systems, LNAV/VNAV NA below -22°C (-7°F) or above 39°C (102°F). Simultaneous approach authorized with Rwy 22R. DME/DME RNP-0.3 NA. LNAV procedure NA during simultaneous operations. Use of FD or AP providing RNAV track guidance required during simultaneous operations.

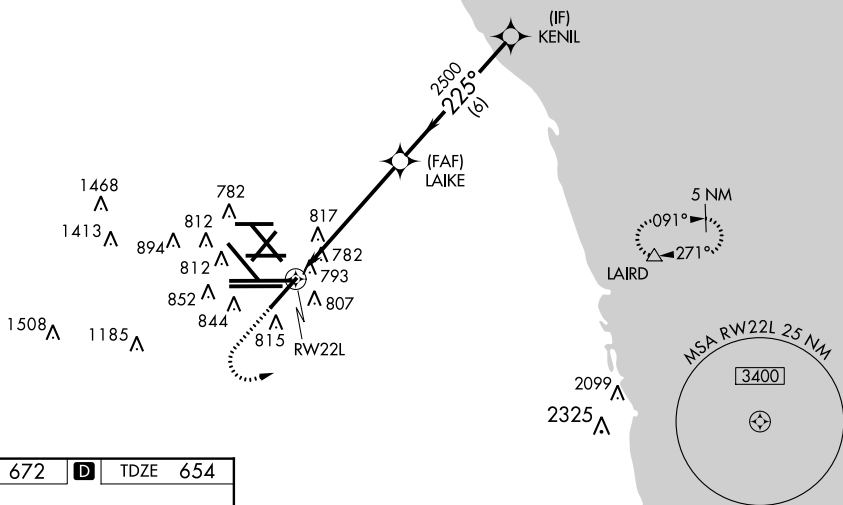


MISSED APPROACH: Climb to 1100 then climbing left turn to 4000 direct LAIRD and hold, continue climb-in-hold to 4000.

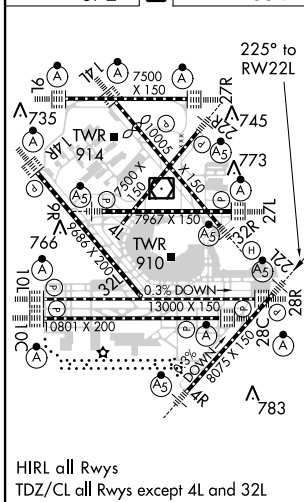
ATIS 135.4	CHICAGO APP CON 282.225 119.0 393.1	O'HARE TOWERS 128.15 348.0 (Rwy 9L/27R) (NORTH) 120.75 121.15 126.9 132.7 348.0 (CENTER)				GND CON (TWR CENTER) 124.125 (TWR NORTH) 121.75 (OBND) 121.9 (IBND) 134.15 (Rwy 10C/28C)
----------------------	---	--	--	--	--	--

RADAR REQUIRED

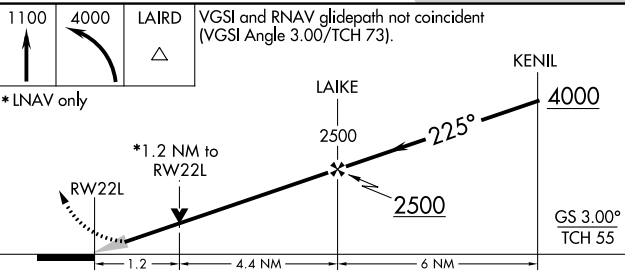
CLNC DEL
121.6



ELEV 672	D	TDZE 654
----------	----------	----------



HIRL all Rwy's
TDZ/CL all Rwy's except 4L and 32L



CATEGORY	A	B	C	D
LPV DA		854/24	200 (200-½)	
LNAV/VNAV DA		1066/45	412 (400-¾)	
LNAV MDA	1120/24	466 (500-½)	1120/50	466 (500-1)
CIRCLING	1220-1	548 (600-1)	1220-1½ 548 (600-1½)	1240-2 568 (600-2)