

WAAS CH <b>90504</b> <b>W22A</b>	APP CRS <b>223°</b>	Rwy Idg <b>7500</b> TDZE <b>652</b> Apt Elev <b>672</b>
----------------------------------------	------------------------	---------------------------------------------------------------

# RNAV (GPS) RWY 22R

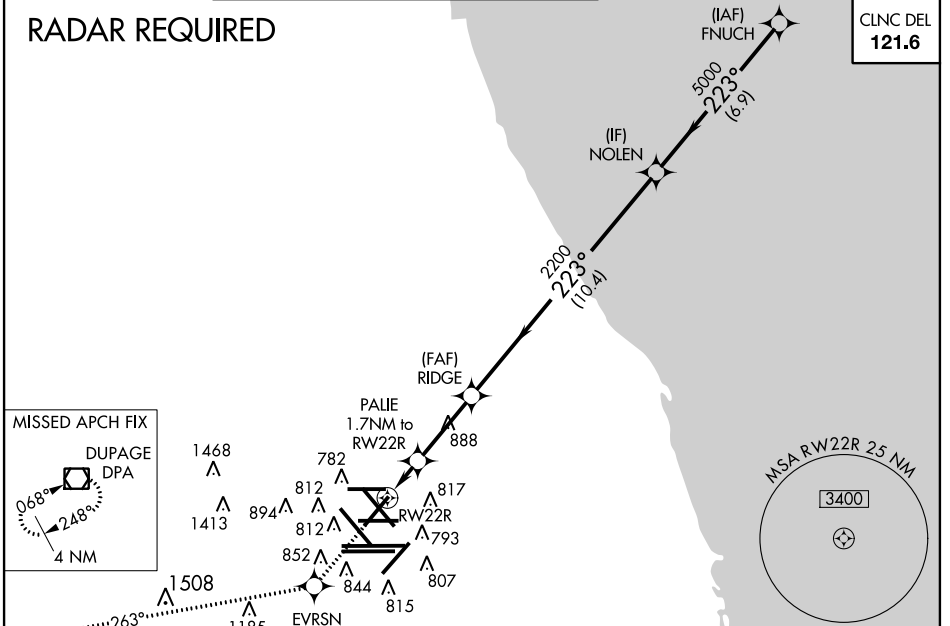
CHICAGO-O'HARE INTL (ORD)

▼ For uncompensated Baro-VNAV systems, LNAV/VNAV NA below -22°C (-7°F) or above 39°C (102°F). Simultaneous approach authorized with Rwy 22L. DME/DME RNP-0.3 NA. LNAV procedure NA during simultaneous operations. Use of FD or AP providing RNAV track guidance required during simultaneous operations.

MALSRL  
MISSED APPROACH: Climb to 4000 direct EVRSN and on track 263° to DPA VOR/DME and hold.

ATIS <b>135.4</b> <b>282.225</b>	CHICAGO APP CON <b>119.0 393.1</b>	O'HARE TOWERS <b>128.15 348.0</b> (Rwy 9L/27R) (NORTH) <b>120.75 121.15 126.9 132.7 348.0</b> (CENTER)	GND CON (TWR CENTER) <b>121.75</b> (TWR NORTH) <b>121.9</b> (ALL TWRs) <b>134.15</b> (Rwy 10C/28C)
----------------------------------------	---------------------------------------	--------------------------------------------------------------------------------------------------------------	-------------------------------------------------------------------------------------------------------------

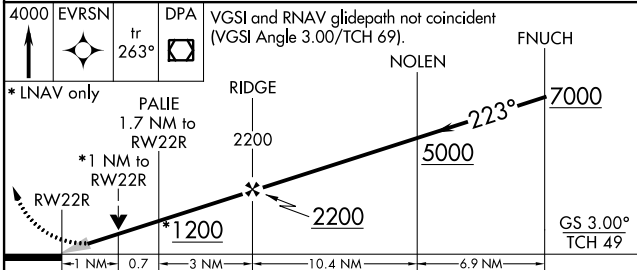
## RADAR REQUIRED



EC-3, 26 JUN 2014 to 24 JUL 2014

EC-3, 26 JUN 2014 to 24 JUL 2014

4000 EVRSN tr 263° DPA VGSI and RNAV glidepath not coincident (VGSI Angle 3.00/TCH 69).



CATEGORY	A	B	C	D
LPV DA		852/24	200 (200-½)	
LNAV/VNAV DA		972/32	320 (300-¾)	
LNAV MDA	1040/24	388 (400-½)	1040/35	388 (400-¾)
CIRCLING	1220-1	548 (600-1)	1220-1½	1240-2 568 (600-2)

