

WAAS CH 77804 W27A	APP CRS 273°	Rwy Idg TDZE Apt Elev	7782 654 672
----------------------------------------	------------------------	-----------------------------	-----------------------------------------

RNAV (GPS) RWY 27L

CHICAGO-O'HARE INTL (ORD)

▼ For uncompensated Baro-VNAV systems, LNAV/VNAV NA below -21°C (-5°F) or above 54°C (130°F). Simultaneous approach authorized with Rwy 27R and Rwy 28C/R. DME/DME RNP-0.3 NA. LNAV procedure NA during simultaneous operations. Use of FD or AP providing RNAV track guidance required during simultaneous operations. For inop ALSF, increase LNAV Cat C/D visibility to 1½.

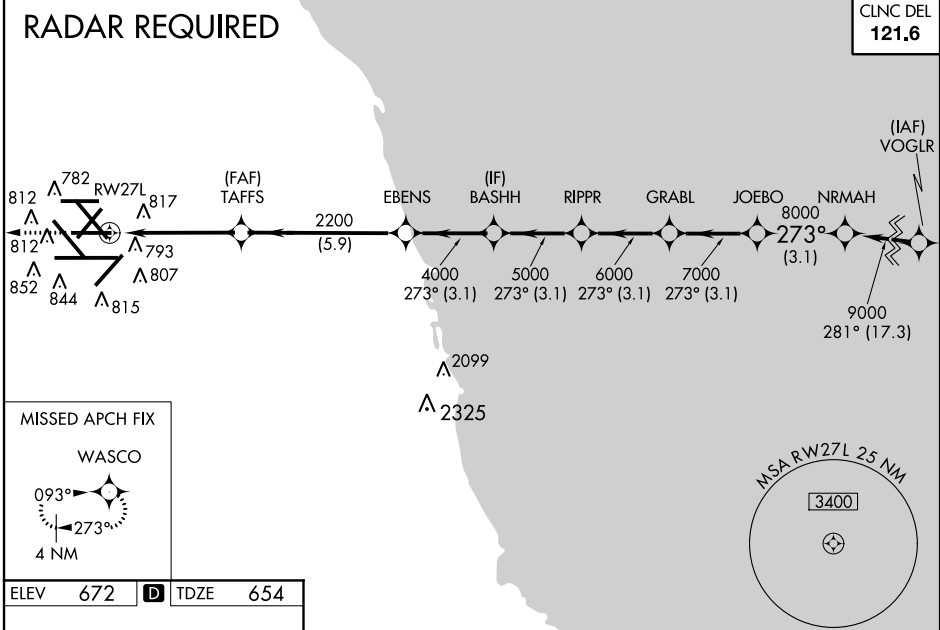


MISSED APPROACH:
Climb to 4000 direct WASCO and hold.

ATIS 135.4	CHICAGO APP CON 119.0 393.1	O'HARE TOWERS 128.15 348.0 (Rwy 9L/27R) (NORTH)				GND CON (TWR CENTER) 121.75 (OBND) 121.9 (IBND) 134.15 (Rwy 10C/28C)
282.225		120.75	121.15	126.9	132.7	348.0 (CENTER)
				124.125 (TWR NORTH)	226.675 (ALL TWRs)	

RADAR REQUIRED

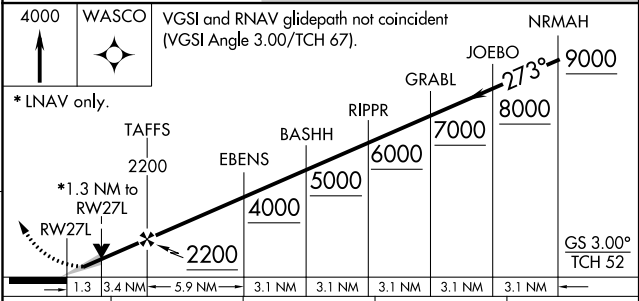
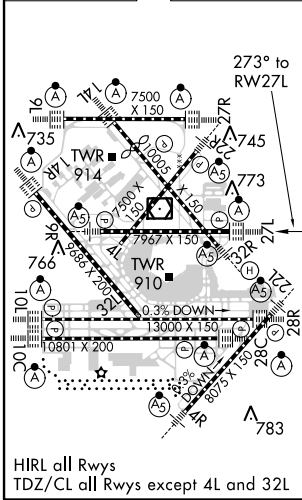
CLNC DEL
121.6



EC-3, 26 JUN 2014 to 24 JUL 2014

EC-3, 26 JUN 2014 to 24 JUL 2014

ELEV	672	D	TDZE	654
------	------------	----------	------	------------



CATEGORY	A	B	C	D
LPV DA	854/24 200 (200-½)			
LNAV/VNAV DA	1127/60 473 (500-1¼)			
LNAV MDA	1120/24	466 (500-½)	1120/50	466 (500-1)
CIRCLING	1220-1	548 (600-1)	1220-1½ 548 (600-½)	1460-2½ 788 (800-2½)