

| | | | |
|--|------------------------|-----------------------------|---|
| WAAS CH 69508 W27B | APP CRS 273° | Rwy Idg TDZE Apt Elev | 7500 664 672 |
|--|------------------------|-----------------------------|---|

RNAV (GPS) RWY 27R

CHICAGO-O'HARE INTL (ORD)

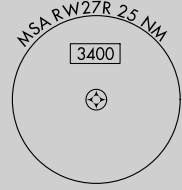
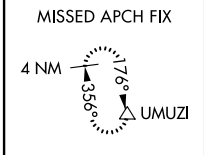
⚠ For uncompensated Baro-VNAV systems, LNAV/VNAV NA below -21°C (-5°F) or above 54°C (130°F). Simultaneous approach authorized with Rwy 27L and Rwy 28C\R.

⚠ DME/DME RNP-0.3 NA. LNAV procedure NA during simultaneous operations. Use of FD or AP providing RNAV track guidance required during simultaneous operations.

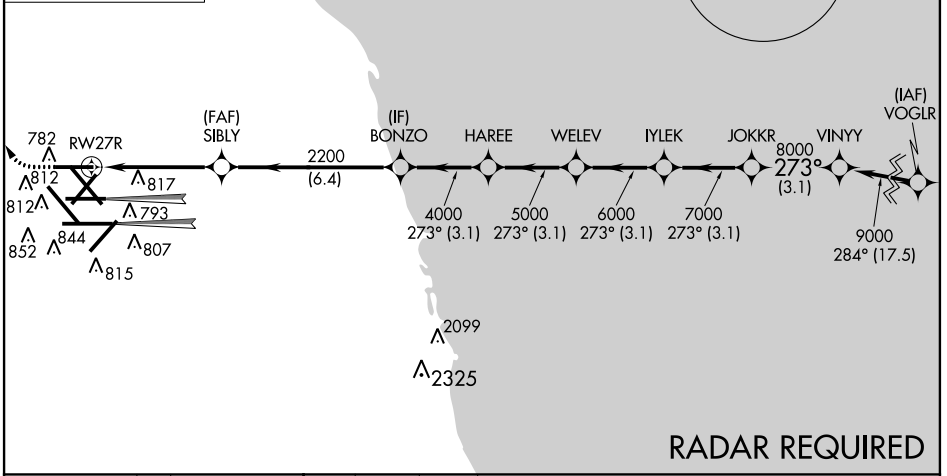


MISSSED APPROACH:
Climb to 1100 then climbing right turn to 4000 direct UMUZI and hold.

| | | | | | | | |
|----------------------|---------------------------------------|---|---------------|--------------|-----------------------------|--|-----------------------------|
| ATIS 135.4 | CHICAGO APP CON 119.0 393.1 | O'HARE TOWERS 128.15 348.0 (Rwy 9L/27R) (NORTH) | | | | GND CON (TWR CENTER) 124.125 (TWR NORTH) | 121.75 (OBND) |
| 282.225 | | 120.75 | 121.15 | 126.9 | 132.7 348.0 (CENTER) | 226.675 (ALL TWRS) | 121.9 (IBND) |
| | | | | | | | 134.15 (Rwy 10C/28C) |



CLNC DEL
121.6



ELEV 672 **D** TDZE 664

