

WAAS CH 42634 W28B	APP CRS 273°	Rwy Idg 10801 TDZE 651 Apt Elev 672
--	------------------------	--

RNAV (GPS) RWY 28C

CHICAGO-O'HARE INTL (ORD)

▼ For uncompensated Baro-VNAV systems, LNAV/VNAV NA below -19°C (-2°F) or above 54°C (130°F). Simultaneous approach authorized with Rwy 27L/R and Rwy 28R. DME/DME RNP-0.3 NA. For inop ALSF, increase LNAV Cat A/B visibility to RVR 5500. LNAV Procedure NA during simultaneous operations. Use of FD or AP providing RNAV track guidance required during simultaneous operations.

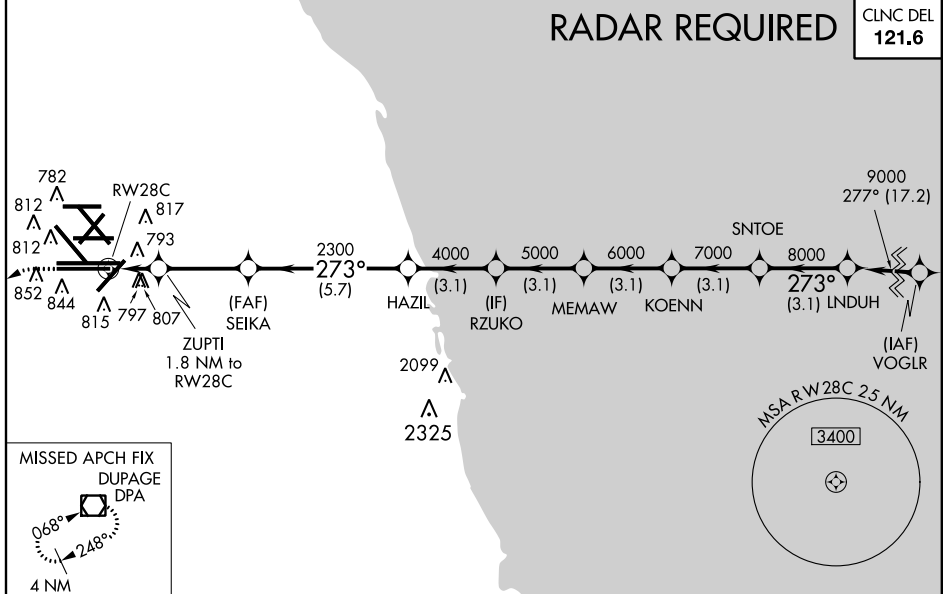


MISSED APPROACH:
Climb to 1100 then climbing left turn 4000 direct DPA VOR/DME and hold.

ATIS 135.4 282.225	CHICAGO APP CON 119.0 393.1	O'HARE TOWERS 128.15 348.0 (Rwy 9L/27R) (NORTH) 120.75 121.15 126.9 132.7 348.0 (CENTER)	GND CON 124.125 (TWR NORTH) 226.675 (ALL TWRS)	(TWR CENTER) 121.75 (OBND) 121.9 (IBND) 134.15 (Rwy 10C/28C)
--	---------------------------------------	--	--	--

RADAR REQUIRED

CLNC DEL
121.6

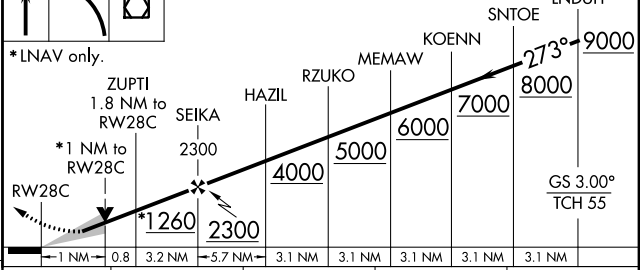
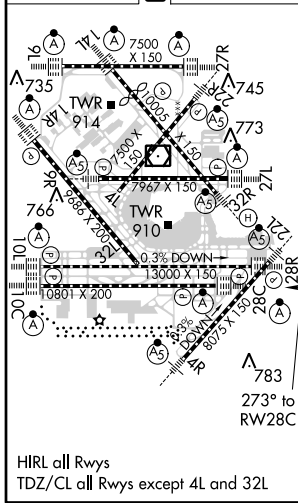


EC-3, 26 JUN 2014 to 24 JUL 2014

EC-3, 26 JUN 2014 to 24 JUL 2014

ELEV 672 TDZE 651

1100 4000 DPA VGSi and RNAV glidepath not coincident (VGSi Angle 3.00/TCH 80).



CATEGORY	A	B	C	D
LPV DA		851/24	200 (200-½)	
LNAV/VNAV DA		1095/50	444 (500-1)	
LNAV MDA	1060/24	409 (400-½)	1060/40	409 (400-¾)
<input checked="" type="checkbox"/> CIRCLING	1220-1	548 (600-1)	1220-1½ 548 (600-1½)	1460-2½ 788 (800-2½)