

WAAS CH 42804 W28A	APP CRS 273°	Rwy Idg 13000 TDZE 651 Apt Elev 672
--	------------------------	--

RNAV (GPS) RWY 28R

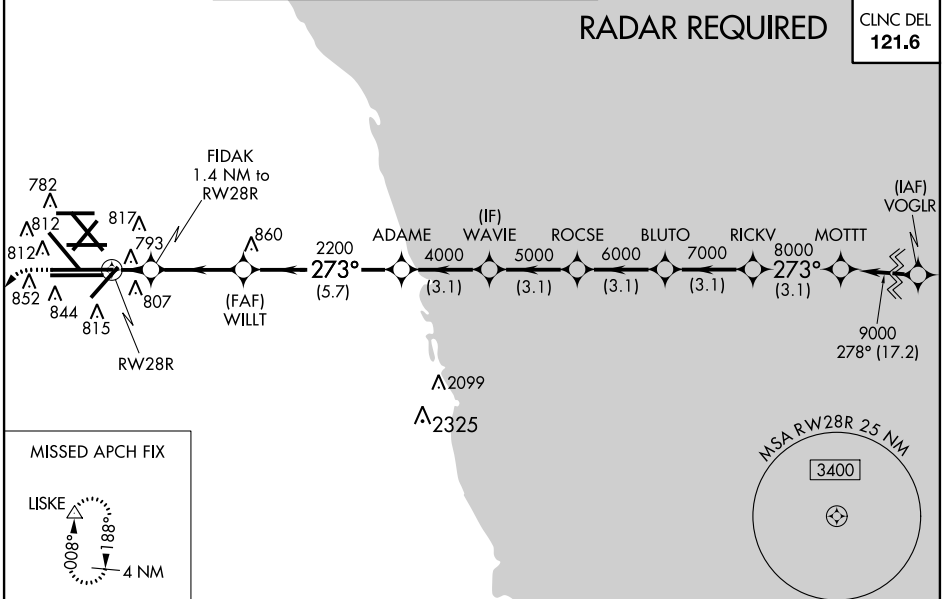
CHICAGO-O'HARE INTL (ORD)

▼ For uncompensated Baro-VNAV systems, LNAV/VNAV NA below -21°C (-5°F) or above 54°C (130°F). Simultaneous approach authorized with Rwy 27L/R. DME/DME RNP-0.3 NA. For inop ALSF, increase LNAV Cat C/D visibility to RVR 6000. LNAV procedure NA during simultaneous operations. Use of FD or AP providing RNAV track guidance required during simultaneous operations.

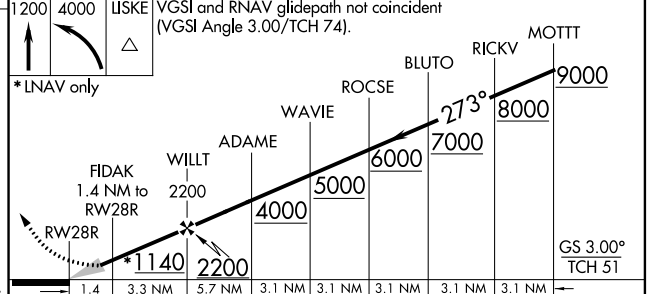
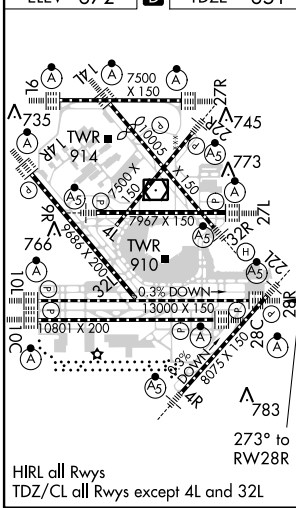
ALSF-2

MISSED APPROACH: Climb to 1200 then climbing left turn to 4000 direct LISKE and hold, continue climb-in-hold to 4000.

ATIS 135.4 282.225	CHICAGO APP CON 119.0 393.1	O'HARE TOWERS 128.15 348.0 (Rwy 9L/27R) (NORTH) 120.75 121.15 126.9 132.7 348.0 (CENTER)	GND CON (TWR CENTER) 121.75 (TWR NORTH) 121.9 (IBND) 134.15 (Rwy 10C/28C)
--	---------------------------------------	--	---



ELEV 672	D	TDZE 651
-----------------	----------	-----------------



	1.4	3.3 NM	5.7 NM	3.1 NM	3.1 NM	3.1 NM	3.1 NM	3.1 NM
CATEGORY	A			B		C		D
LPV DA	851/24			200 (200-1/2)				
LNAV/VNAV DA	964/24			313 (300-1/2)				
LNAV MDA	1060/24 409 (400-1/2)			1060/40 409 (400-3/4)				
CIRCLING	1220-1 548 (600-1)			1220-1 1/2 548 (600-1 1/2)		1240-2 568 (600-2)		

EC-3, 26 JUN 2014 to 24 JUL 2014

EC-3, 26 JUN 2014 to 24 JUL 2014