

RNAV (GPS) RWY 32R

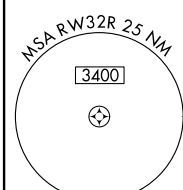
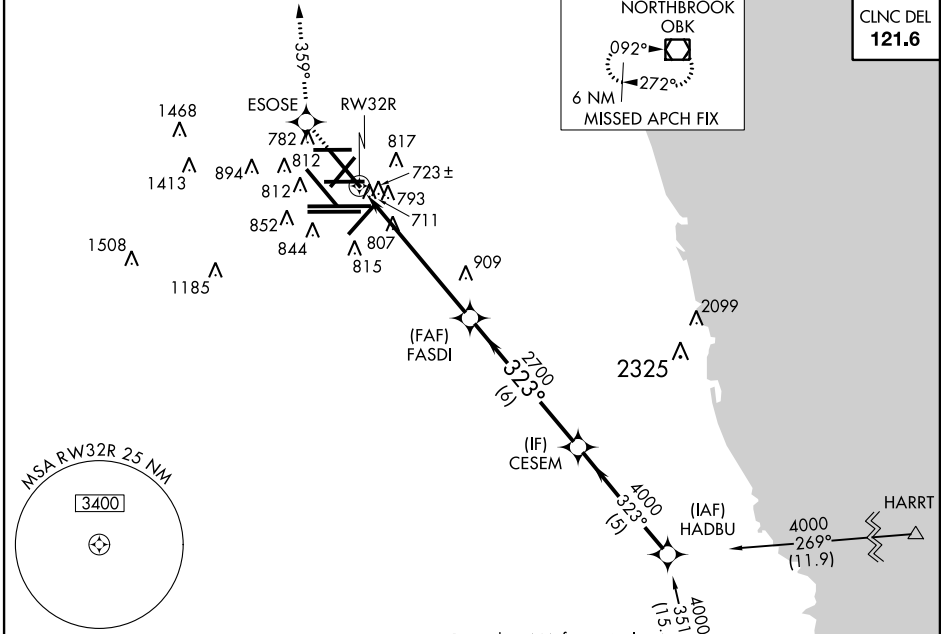
CHICAGO-O'HARE INTL (ORD)

WAAS CH 69504 W32A	APP CRS 323°	Rwy Idg 10005 TDZE 653 Apt Elev 672
--	------------------------	--

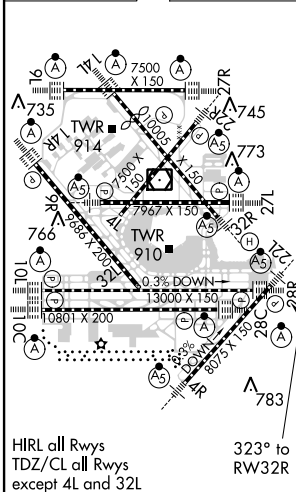
▼ For inoperative MALS, increase LPV all Cats visibility to RVR 5000. For uncompensated Baro-VNAV systems, LNAV/VNAV NA below -16°C (4°F) or above 48°C (118°F). DME/DME RNP-0.3 NA.

MALS MISSED APPROACH: Climb to 4000 direct ESOSE and right turn via 359° track to OBK VOR/DME and hold.

ATIS 135.4 282.225	CHICAGO APP CON 119.0 393.1	O'HARE TOWERS 128.15 348.0 (Rwy 9L/27R) (NORTH) 120.75 121.15 126.9 132.7 348.0 (CENTER)	GND CON 124.125 (TWR NORTH) 226.675 (ALL TWRS)	(TWR CENTER) 121.75 (OBND) (TWR SOUTH) 121.9 (IBND) 134.15 (Rwy 10C/28C)
--	---------------------------------------	--	--	---

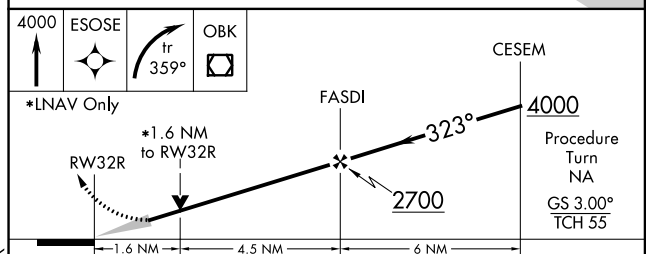


ELEV 672	D	TDZE 653
----------	----------	----------



HIRL all Rws
TDZ/CL all Rws
except 4L and 3L

Procedure NA for arrivals at CGT VORTAC via V7 southbound.



CATEGORY	A	B	C	D
LPV DA		928/24	275 (300-1/2)	
LNAV/VNAV DA		1073/50	420 (500-1)	
LNAV MDA	1220/24	567 (600-1/2)	1220/50 567 (600-1)	1220/60 567 (600-1/4)
CIRCLING	1220-1	548 (600-1)	1220-1 1/2 548 (600-1/2)	1240-2 568 (600-2)

EC-3, 26 JUN 2014 to 24 JUL 2014

EC-3, 26 JUN 2014 to 24 JUL 2014