

WAAS CH <b>62905</b> <b>W04B</b>	APP CRS <b>042°</b>	Rwy Idg TDZE Apt Elev	<b>7500</b> <b>658</b> <b>672</b>
--	------------------------	-----------------------------	---

# RNAV (GPS) RWY 4L

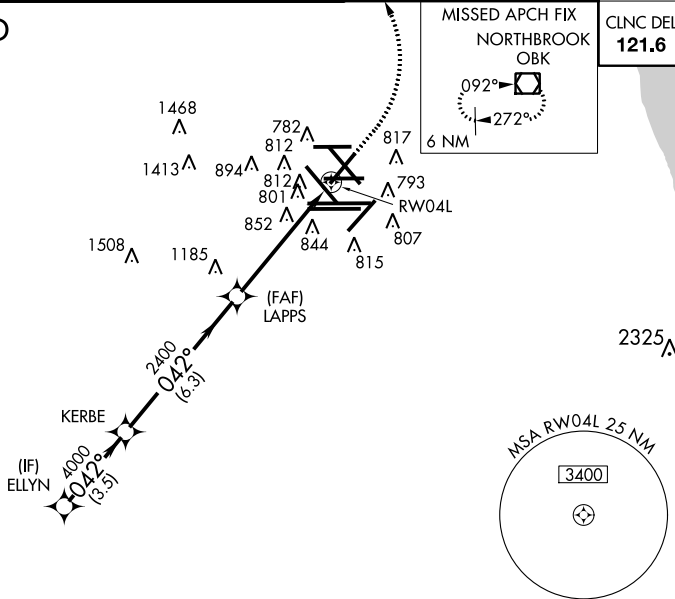
CHICAGO-O'HARE INTL (ORD)

▼ For uncompensated Baro-VNAV systems, LNAV/VNAV NA below -22°C (-7°F) or above 39°C (102°F). Simultaneous approach authorized with Rwy 4R. DME/DME RNP-0.3 NA. LNAV procedure NA during simultaneous operations. Use of FD or AP providing RNAV track guidance required during simultaneous operations.

MISSED APPROACH: Climb to 1300 then climbing left turn to 4000 direct OBK VOR/DME and hold.

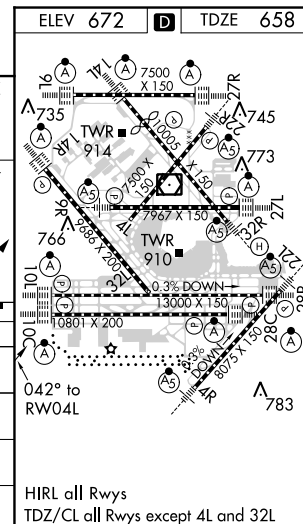
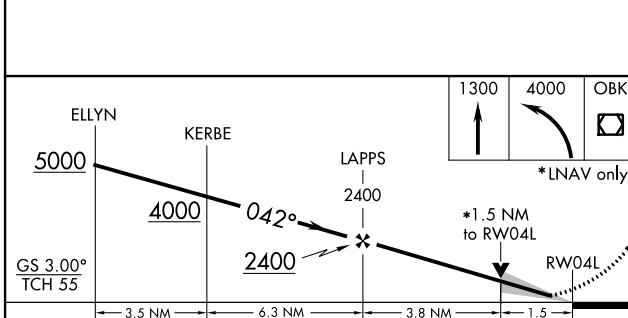
ATIS <b>135.4</b> <b>282.225</b>	CHICAGO APP CON <b>119.0 393.1</b>	O'HARE TOWERS (Rwy 9L/27R) (NORTH) <b>128.15 348.0</b> <b>120.75 121.15 126.9 132.7 348.0</b> (CENTER)	GND CON (TWR NORTH) <b>121.75</b> (OBND) (TWR CENTER) <b>121.9</b> (IBND) (Rwy 10C/28C) <b>134.15</b>
--	--	---	--

## RADAR REQUIRED



EC-3, 26 JUN 2014 to 24 JUL 2014

EC-3, 26 JUN 2014 to 24 JUL 2014



CATEGORY	A	B	C	D
LPV DA		858/40	200 (200-¾)	
LNAV/VNAV DA		1117-1½	459 (500-1½)	
LNAV MDA	1180/55	522 (600-1¼)	1180-1½	522 (600-1½)
CIRCLING	1220-1	548 (600-1)	1220-1½	1240-2 568 (600-2)