

WAAS CH 81929 W04A	APP CRS 044°	Rwy Idg 8075 TDZE 661 Apt Elev 672
--	------------------------	---

RNAV (GPS) RWY 4R

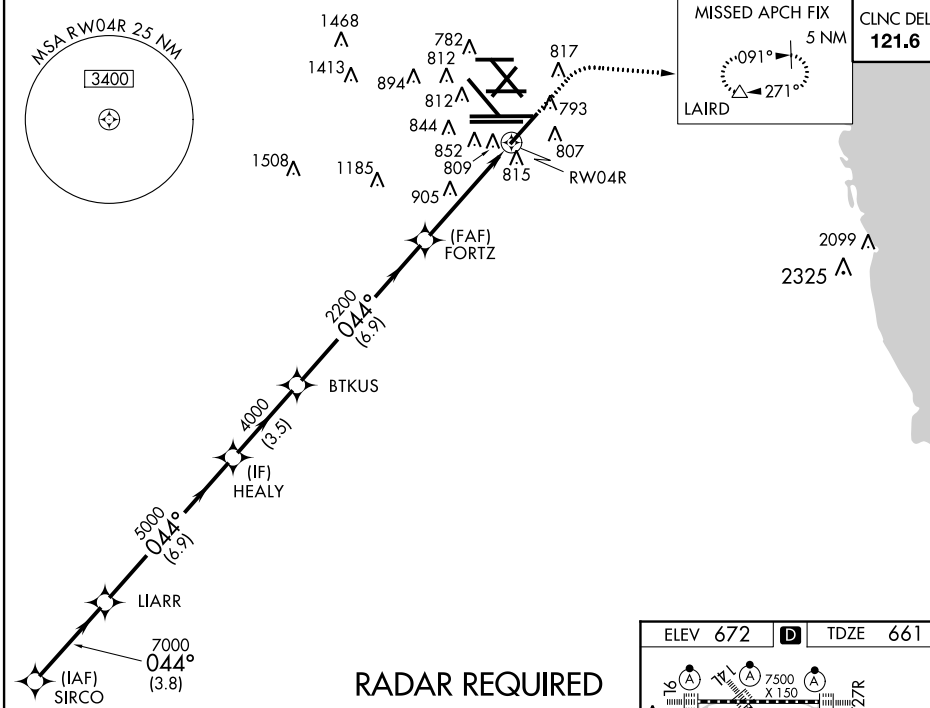
CHICAGO-O'HARE INTL (ORD)

▽ For uncompensated Baro-VNAV systems, LNAV/VNAV NA below -22°C (-7°F) or above 39°C (102°F). Simultaneous approach authorized with Rwy 4L. DME/DME RNP-0.3 NA. LNAV procedure NA during simultaneous operations. Use of FD or AP providing RNAV track guidance required during simultaneous operations.



MISSED APPROACH: Climb to 1200 then climbing right turn to 4000 direct LAIRD and hold, continue climb-in-hold to 4000.

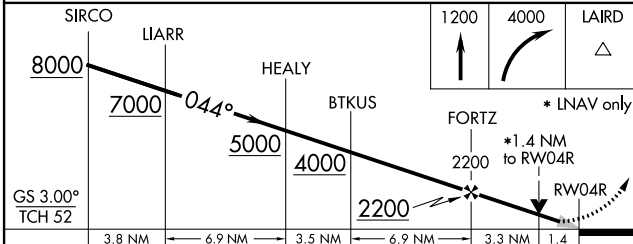
ATIS 135.4 282.225	CHICAGO APP CON 119.0 393.1	O'HARE TOWERS 128.15 348.0 (Rwy 9L/27R) (NORTH) 120.75 121.15 126.9 132.7 348.0 (CENTER)	GND CON (TWR CENTER) 121.75 (OBND) 121.9 (IBND) 134.15 (Rwy 10C/28C)
--	---------------------------------------	--	--



EC-3, 26 JUN 2014 to 24 JUL 2014

EC-3, 26 JUN 2014 to 24 JUL 2014

RADAR REQUIRED



CATEGORY	A	B	C	D
LPV DA		861/24	200 (200-½)	
LNAV/VNAV DA		990/32	329 (400-⅓)	
LNAV MDA	1160/24	499 (500-½)	1160/50	499 (500-1)
CIRCLING	1220-1	548 (600-1)	1220-1½ 548 (600-1½)	1240-2 568 (600-2)

