


WAAS CH 78204 W09A	APP CRS 093°	Rwy ldg 7709 TDZE 660 Apt Elev 672
--	------------------------	---

RNAV (GPS) RWY 9R

CHICAGO-O'HARE INTL (ORD)

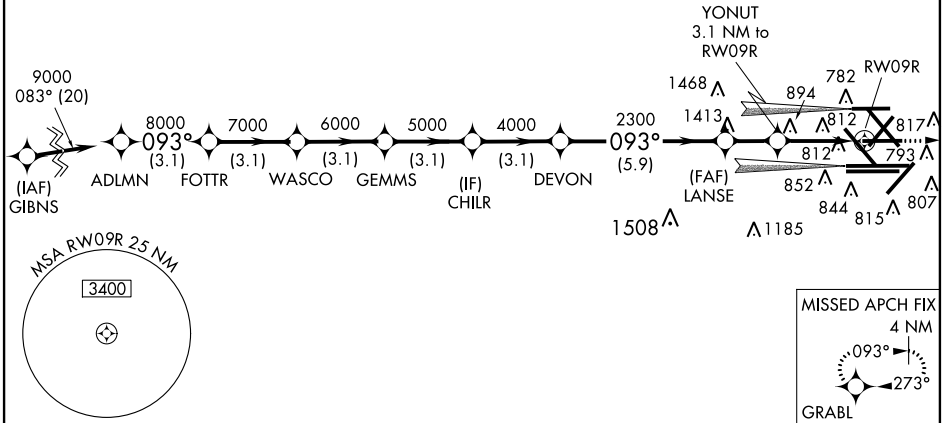
⚠ For uncompensated Baro-VNAV systems, LNAV/VNAV NA below -22°C (-5°F) or above 54°C (130°F). Simultaneous approach authorized with Rwy 9L and Rwy 10L/C. DME/DME RNP-0.3 NA. LNAV procedure NA during simultaneous operations. Use of FD or AP providing RNAV track guidance required during simultaneous operations.

MALSR  MISSED APPROACH: Climb to 4000 direct GRABL and hold.

ATIS 135.4 282.225	CHICAGO APP CON 119.0 393.1	O'HARE TOWERS 128.15 348.0 (Rwy 9L/27R) (NORTH) 120.75 121.15 126.9 132.7 348.0 (CENTER)	GND CON 124.125 (TWR NORTH) 226.675 (ALL TWRS)	(TWR CENTER) 121.75 (OBND) 121.9 (IBND) 134.15 (Rwy 10C/28C)
--	--	--	--	--

RADAR REQUIRED

CLNC DEL
121.6



EC-3, 26 JUN 2014 to 24 JUL 2014

EC-3, 26 JUN 2014 to 24 JUL 2014

ELEV 672		TDZE 660	
VGSI and RNAV glidepath not coincident (VGSI Angle 3.00/TCH 74).			
ADLMN FOTTR WASCO GEMMS CHILR DEVON		LANSE YONUT 3.1 NM to RWY 9R	
9000 8000 7000 6000 5000 4000		2300 *1700	
GS 3.00° TCH 57		*1.3 NM to RWY 9R	
3.1 NM 3.1 NM 3.1 NM 3.1 NM 3.1 NM		5.9 NM 1.9 NM 1.8 1.3	
CATEGORY	A	B	C D
LPV DA	860/24 200 (200-½)		
LNAV/VNAV DA	1026/40 366(400-¾)		
LNAV MDA	1160/24 500 (500-½)	1160/50 500 (500-1)	
CIRCLING	1220-1 548 (600-1)	1220-1½ 548 (600-1½)	1460-2½ 788 (900-2½)

