

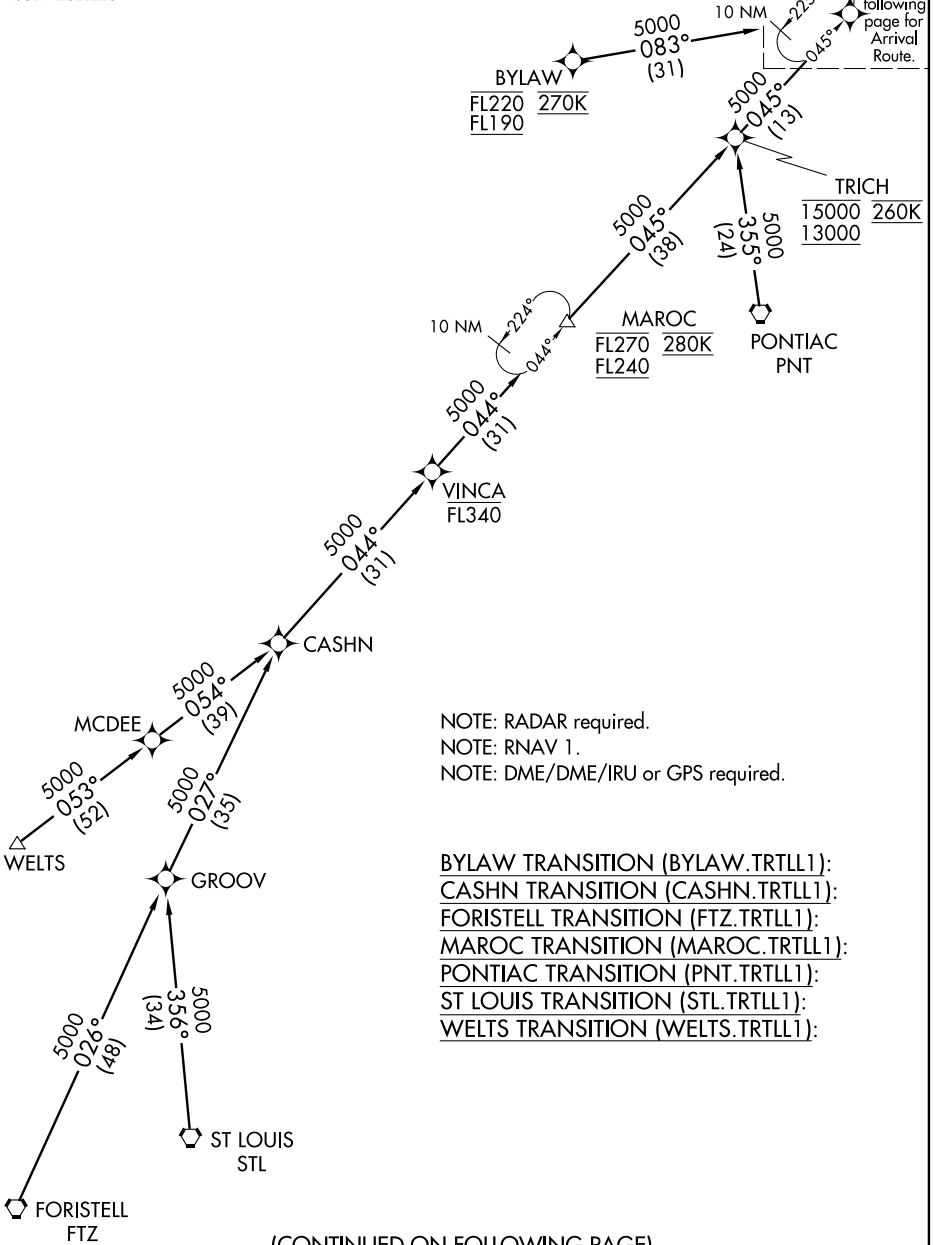
TRTLL ONE ARRIVAL (RNAV) Transition Routes

CHICAGO APP CON
119.0 393.1
ATIS
135.4 282.225

TRTLL

11000 250K

See following page for Arrival Route.



NOTE: RADAR required.
NOTE: RNAV 1.
NOTE: DME/DME/IRU or GPS required.

- BYLAW TRANSITION (BYLAW.TRLL1):
- CASHN TRANSITION (CASHN.TRLL1):
- FORISTELL TRANSITION (FTZ.TRLL1):
- MAROC TRANSITION (MAROC.TRLL1):
- PONTIAC TRANSITION (PNT.TRLL1):
- ST LOUIS TRANSITION (STL.TRLL1):
- WELTS TRANSITION (WELTS.TRLL1):

(CONTINUED ON FOLLOWING PAGE)

NOTE: Chart not to scale.

TRTLL ONE ARRIVAL (RNAV) Transition Routes

EC-3, 26 JUN 2014 to 24 JUL 2014

EC-3, 26 JUN 2014 to 24 JUL 2014