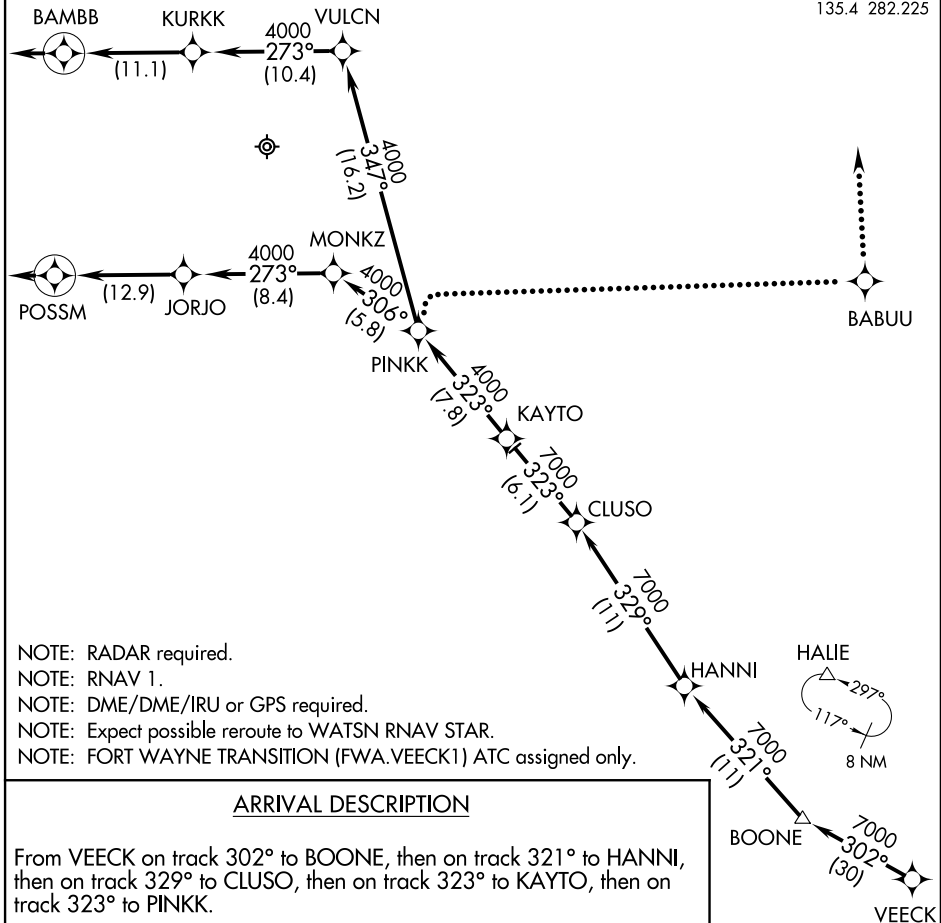


VEECK ONE ARRIVAL (RNAV) Arrival Routes

CHICAGO O'HARE INTL (ORD)
CHICAGO, ILLINOIS

CHICAGO APP CON
119.0 393.1
ATIS
135.4 282.225



- NOTE: RADAR required.
- NOTE: RNAV 1.
- NOTE: DME/DME/IRU or GPS required.
- NOTE: Expect possible reroute to WATSN RNAV STAR.
- NOTE: FORT WAYNE TRANSITION (FWA.VEECK1) ATC assigned only.

ARRIVAL DESCRIPTION

From VEECK on track 302° to BOONE, then on track 321° to HANNI, then on track 329° to CLUSO, then on track 323° to KAYTO, then on track 323° to PINKK.

LANDING RWY 9L: From PINKK on track 347° to VULCN, then on track 273° to KURKK, then on track 273° to BAMBB, then on track 273°. Expect radar vectors to final approach course.

LANDING RWYS 4L/R, 9R, 10L/C, 14L/R, 22L/R, 27L/R, 28C/R, 32R: From PINKK on track 306° to MONKZ, then on track 273° to JORJO, then on track 273° to POSSM, then on track 273°. Expect radar vectors to final approach course.

LOST COMMUNICATIONS:

ORD AIRCRAFT LANDING WEST: At PINKK, turn right direct BABUU, maintain 5000, then on 360° heading, intercept localizer and execute ILS Rwy 28R apch.

ORD AIRCRAFT LANDING EAST: Standard.

NOTE: Chart not to scale.

VEECK ONE ARRIVAL (RNAV) Arrival Routes

EC-3, 26 JUN 2014 to 24 JUL 2014

EC-3, 26 JUN 2014 to 24 JUL 2014