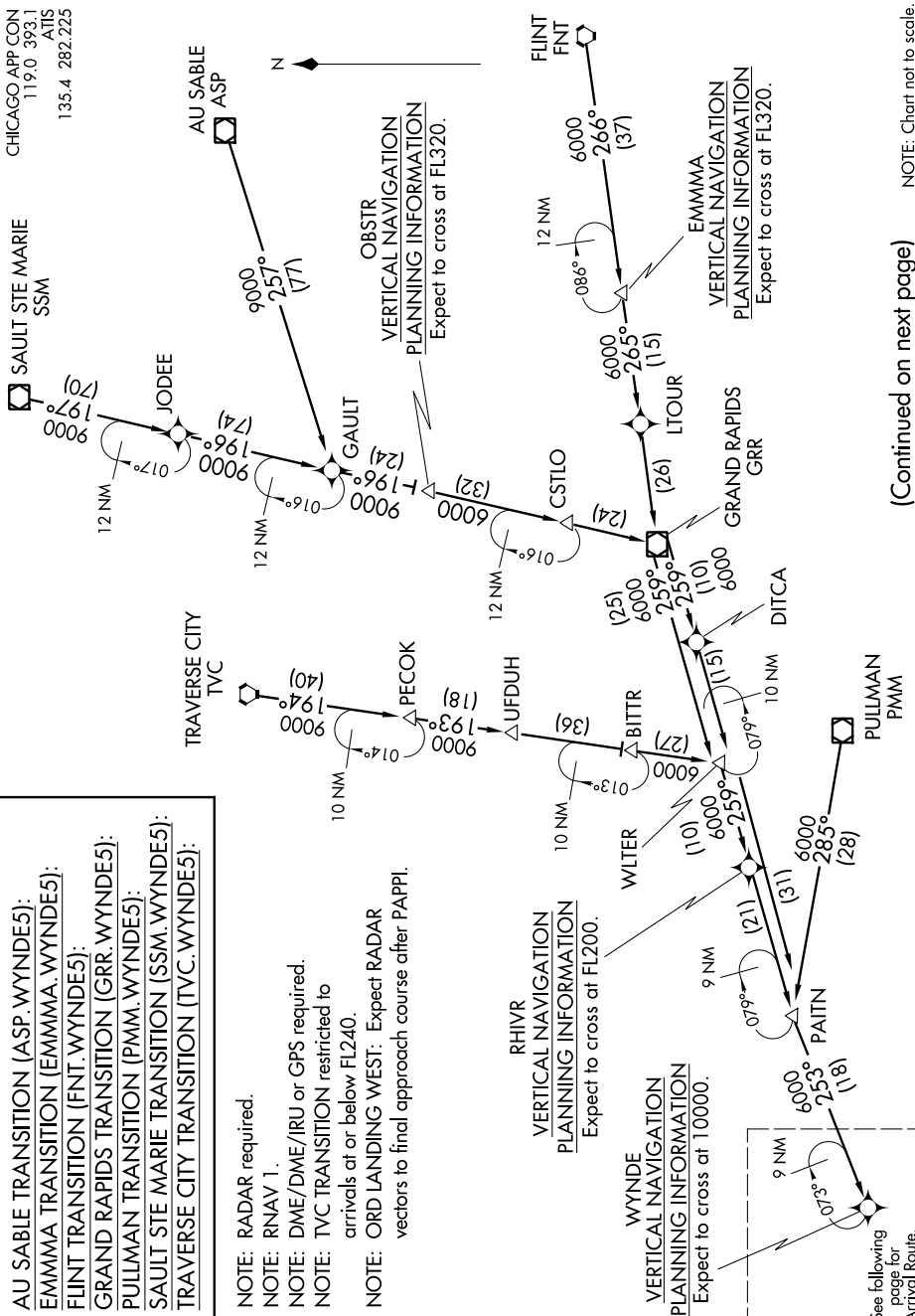


# WYNDE FIVE ARRIVAL (RNAV) Transition Routes

EC-3, 26 JUN 2014 to 24 JUL 2014

- AU SABLE TRANSITION (ASP.WYNDE5):
- EMMMA TRANSITION (EMMMA.WYNDE5):
- FLINT TRANSITION (FNT.WYNDE5):
- GRAND RAPIDS TRANSITION (GRR.WYNDE5):
- PULLMAN TRANSITION (PMM.WYNDE5):
- SAULT STE MARIE TRANSITION (SSM.WYNDE5):
- TRAVERSE CITY TRANSITION (TVC.WYNDE5):

NOTE: RADAR required.  
 NOTE: RNAV 1.  
 NOTE: DME/DME/IRU or GPS required.  
 NOTE: TVC TRANSITION restricted to arrivals at or below FL240.  
 NOTE: ORD LANDING WEST: Expect RADAR vectors to final approach course after PAPP1.



NOTE: Chart not to scale.

(Continued on next page)

EC-3, 26 JUN 2014 to 24 JUL 2014

# WYNDE FIVE ARRIVAL (RNAV) Transition Routes

See following page for Arrival Route.